

TAYLOR MAXWELL

# Argeton

Terracotta Cladding

[taylormaxwell.co.uk](http://taylormaxwell.co.uk)



# Argeton Terracotta Cladding

**The visual impact of a timeless facade, the Argeton terracotta rainscreen system combines the proven durability and natural beauty of clay, with a simple support structure. This enables the designer freedom of expression and the contractor a simple and quick installation process.**

Suitable for use on a new building, refurbishment or re-cladding project, the Argeton facade system is backed by BBA certification and CWCT testing. Providing tangible environmental benefits, Argeton holds the Environmental Product Declaration in accordance with ISO14025 and EN15804 being the European standardised equivalent of a BREEAM accreditation.

## Argeton Tiles

**Argeton tiles are made from 100% natural materials, composed of mixed clay and water, before being extruded to produce plain, grooved or shaped baguette tiles. Fired at high temperatures, the tiles are then cut to length for a defined and consistent finish.**

Achievable both horizontally and vertically, the Argeton terracotta rainscreen tiles and systems are interchangeable to suit specific design requirements. Tile options include:

- **Tampa** tiles are a single, undisturbed panel, fitted using invisible clips. Though these are commonly manufactured to a contemporary, smooth finish, five textured surfaces are also available.
- **Terzo** panels create an alternate visual option with deep grooves extruded into each tile. Available in different widths and distances between grooves, the Terzo panels provide additional customisable elements for your facade design.
- **Lineo** tiles are a stylish choice with 3mm horizontal grooves shaped into the panels surface. Lineo tiles can be combined with Tampa or Terzo tiles within a system for a unique project finish.
- **Barro** baguettes can be manufactured in an elliptic, square, rectangular, or other desired shape. Functionally used for sun protection as a brise soleil when mounted in front of windows, barro baguettes are coloured on all sides for an attractive facade from all perspectives.







Eastside Locks

### — Reliable

Frost, scratch and UV-colour resistant, our terracotta rainscreen is designed without gaskets, pressure clips or seals that can either deteriorate within the design life of the system, or contribute to ‘tile creep’ as a result of thermal movement.

### — Tested



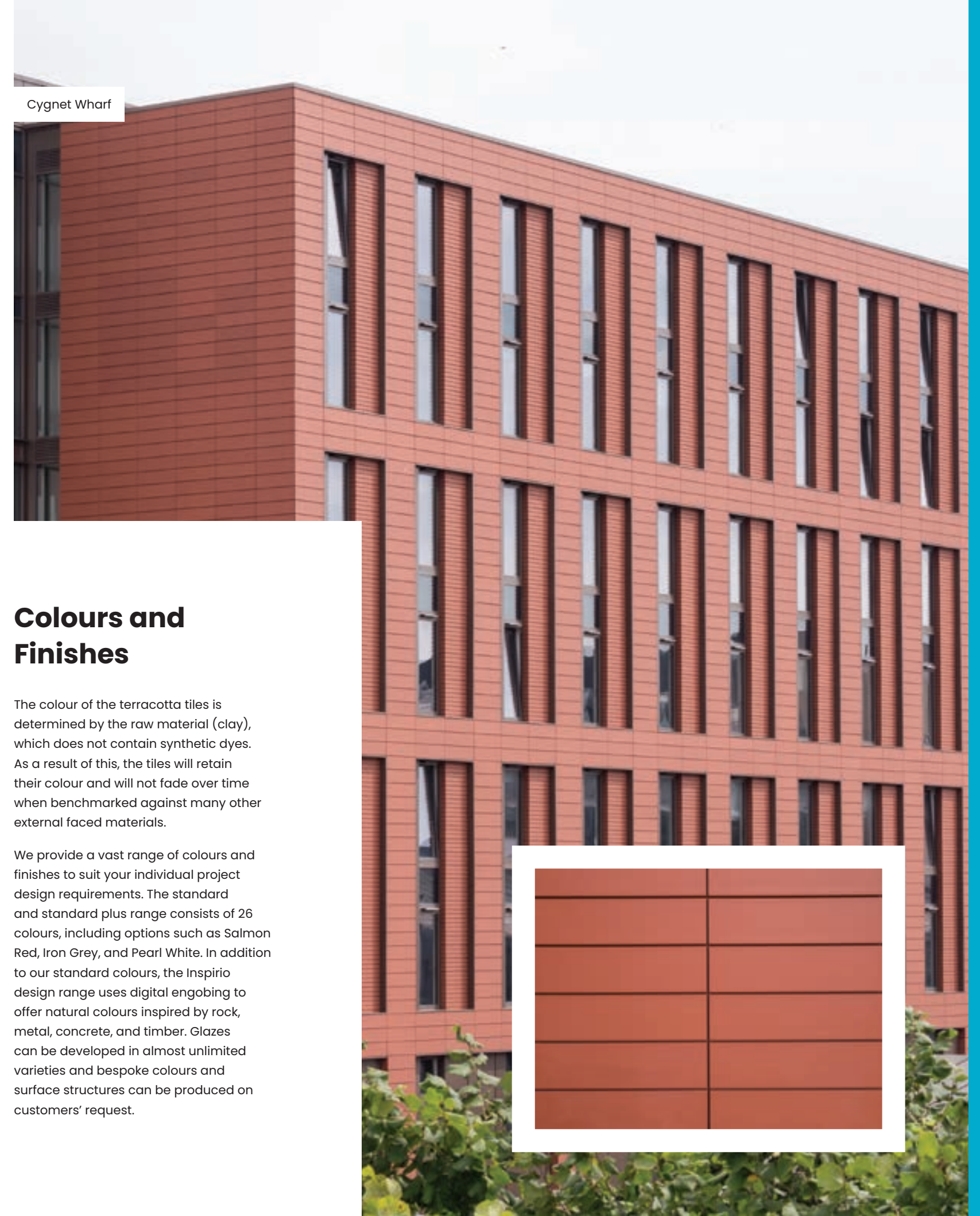
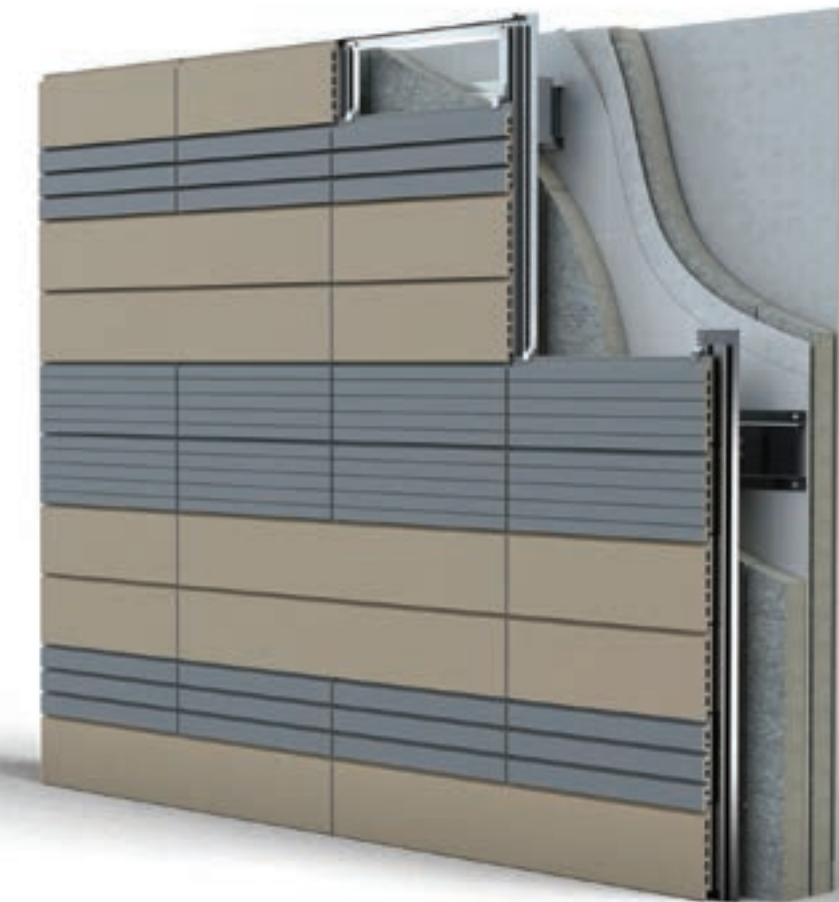
As per the Argeton BBA certificate, “the ceramic tiles, support rails, clamps and clips are classified as ‘non-combustible’ in accordance with national Building Regulations and are not subject to any restriction on building height or proximity to boundaries.”

### — Sustainable

Manufactured directly adjacent to the quarry from which the natural clay is sourced, Argeton tile production minimises the transport of raw material. Confirmed by their ISO 14025 and EN 15804 certified status, the tiles are also fully recyclable, creating a sustainable life cycle.

### — Versatile

Height modules are available from 150–500mm and in module lengths up to 1500mm dependent upon tile module height. In addition to the large standard range and new Inspirio colours, unique shapes and bespoke tiles can also be developed to suit individual project needs.



Cygnnet Wharf

## Colours and Finishes

The colour of the terracotta tiles is determined by the raw material (clay), which does not contain synthetic dyes. As a result of this, the tiles will retain their colour and will not fade over time when benchmarked against many other external faced materials.

We provide a vast range of colours and finishes to suit your individual project design requirements. The standard and standard plus range consists of 26 colours, including options such as Salmon Red, Iron Grey, and Pearl White. In addition to our standard colours, the Inspirio design range uses digital engobing to offer natural colours inspired by rock, metal, concrete, and timber. Glazes can be developed in almost unlimited varieties and bespoke colours and surface structures can be produced on customers’ request.



# Terracotta Cladding

## Colours and Finishes

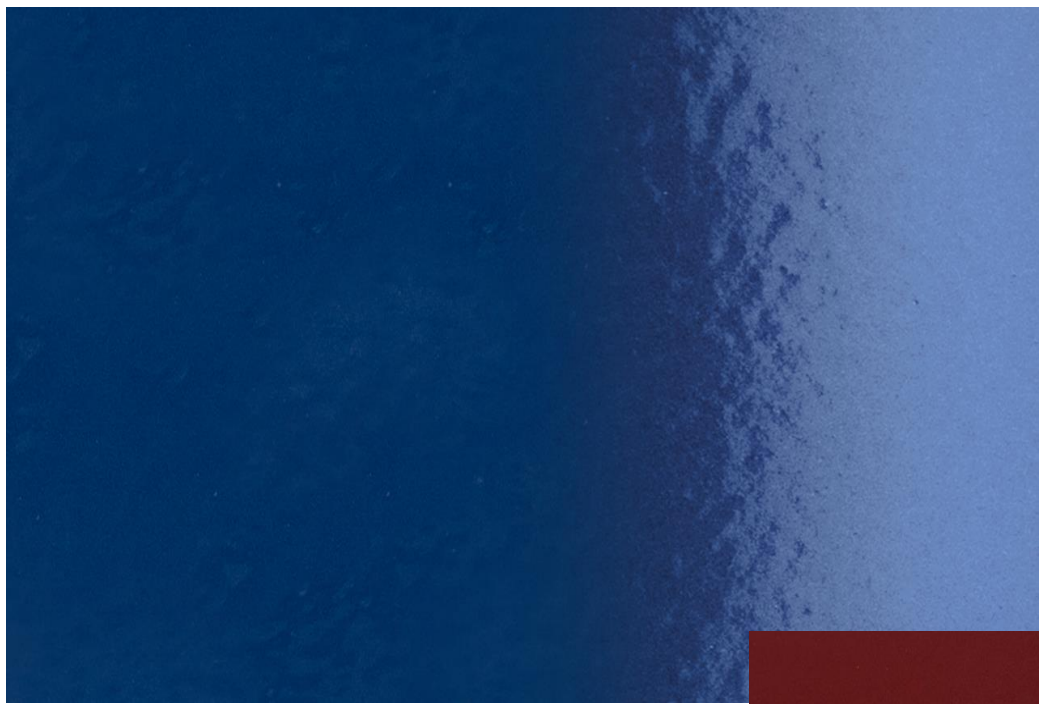
We provide a vast range of colours and finishes to suit your individual project design requirements.

The standard range consists of 10 colours with a further 16 colours as part of our standard plus range. These ranges are made up of a variety of natural and subtle colour options including reds, oranges and earthy browns and creams.

In addition to the standard colours, we can supply glazed finishes in almost an unlimited number of varieties.

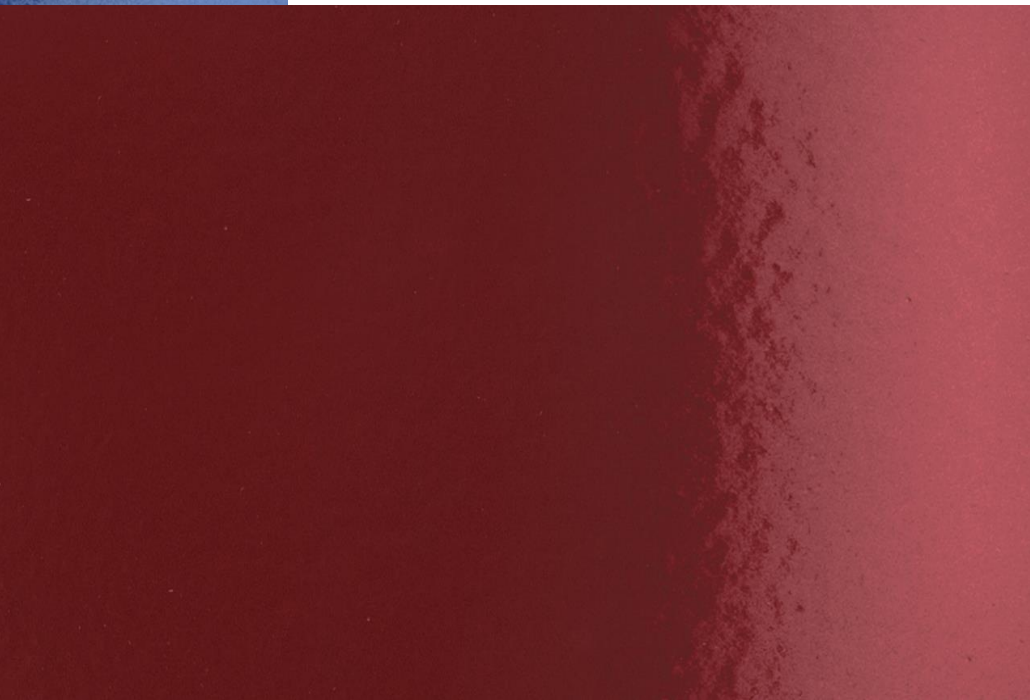
Our standard glazed range includes over 30 options however, individual colours and surface structures can be developed on request.

Contact us to discuss your desired colour and finish.



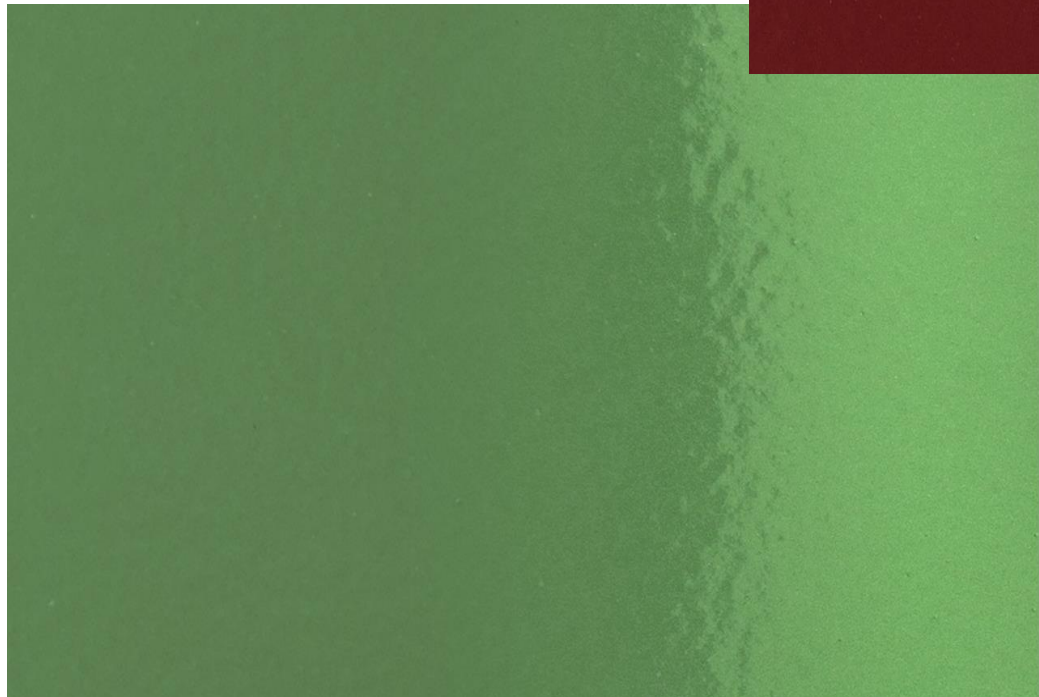
## Standard Profiles

- Tampa
- Terzo
- Lineo
- Danza
- Altivo
- Barro
- Argelite
- Ceramic Corner



## Finishes

- Standard
- Standard Plus
- Glazed

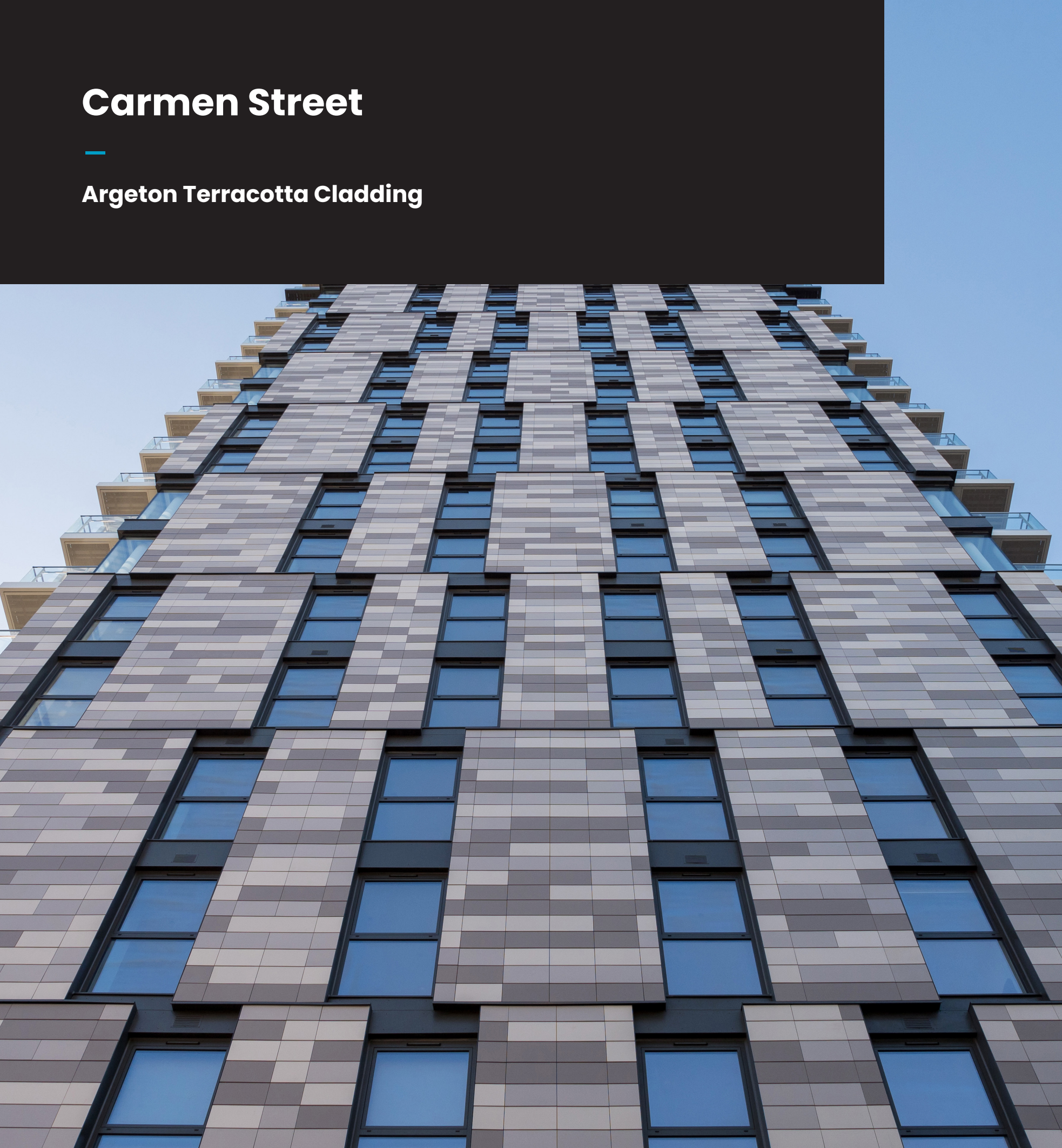


For the full list of colours and finishes available in each range, contact us today or visit our website.



# Carmen Street

## Argeton Terracotta Cladding



Designed by Stock Woolstencroft Architects, managed by main contractor **Telford Homes** and completed by BR Hodgson Facades, Carmen Street in Poplar, London is a mixed-use development offering a combination of social rented, shared ownership and private homes. Built on a brownfield site, the development has played a major part in regenerating the area and serves as a landmark for the Langdon Park DLR station. Located in Poplar, one of the oldest neighbourhoods in London, Carmen Street has given many families and individuals the opportunity to reside within an up-and-coming hotspot in the capital city.

Comprising of 206 homes and 143sqm of commercial space, the scheme includes a freestanding 22 storey tower block, along with two 5 storey buildings that connect Carmen Street and Cording Street. Of the 206 homes, 150 were sold to M&G Real Estate for build to rent, and 56 were sold to Poplar HARCA (Housing and Regeneration Community Association) as affordable housing. 100% of the homes in the development were designed in accordance with the Lifetime Houses Standard, a series of 16 criteria that are intended to make homes more easily adaptable for lifetime use at minimal cost.

The development was carefully considered in response to feedback from local stakeholders and was designed with sustainability as a major focus. The building has both green and brown roofs, along with landscaped communal gardens that are orientated towards the residents for a calming environment in an otherwise busy city.

As determined by its BBA certificate, Argeton terracotta cladding was carefully selected to clad the facade as “the ceramic tiles, support rails, clamps and clips are classified as ‘non-combustible’ in accordance with National Building Regulations and are not subject to any restriction on building height”.



Taylor Maxwell worked in partnership with main contractor **Telford Homes** to specify and supply the Argeton terracotta cladding for this project. The Argeton terracotta rainscreen system combines the proven durability and natural beauty of clay, with a simple support structure. This enabled the architects to have freedom with the design of the tiles, whilst also allowing for a quick installation process, which reduced construction time on site.

The Argeton Tampa (smooth) tiles are available in multiple sizes and the tiles are restrained using concealed clips rivetted to vertical rails (other tile support systems are available). Concealed fixings create a sleek and clean facade that appears to be incorporated directly into the structure of the building. The tiles were selected in three colours; bright grey, cream and granite grey, to create a striking pattern across the facade. This unique design stands out amongst the architecture of the area, which is a mixture of 18th and 19th century terraced houses and 20th century council estates.





# Canon Green Court

## Argeton Terracotta Cladding



**Canon Green Court is a newly completed 11-storey residential building that includes 108 one and two bedroom apartments. Situated on the Canon Green Court complex in Salford, Greater Manchester, this new residential building joins two other pre-existing tower blocks that have been given an external face-lift. Main contractors, Willmott Dixon were appointed by multi award-winning social housing provider Salix Homes to manage the development, which was designed by architects Corstorphine & Wright.**

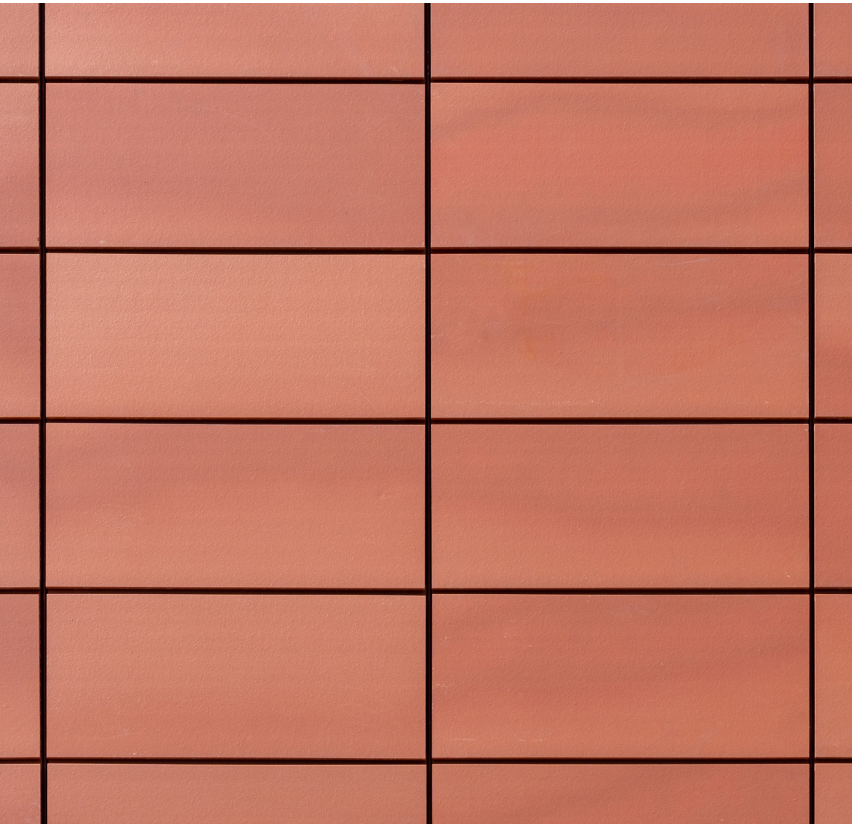
Taylor Maxwell worked with **Willmott Dixon** and **Longworth Building Service** to specify and supply Argeton terracotta cladding in Salmon Red and Ferro Grey to the £22.5m project. The terracotta rainscreen system was expertly installed by Longworth Building Service.

Before its refurbishment, Canon Green Court was a distinctive block of flats made famous by TV crime dramas where it was regularly featured as a gritty backdrop. Social housing provider **Salix Homes** took over the ownership of Canon Green Court in 2015, when tenants voted to transfer their homes from Salford Council. It was subsequently decided that the buildings, which had not been refurbished since the late 1990s, were in need of essential work and refurbishment. Salix Homes then made the decision to create a new apartment block within the grounds to house a further 108 flats, providing much needed housing for local people.

Willmott Dixon were chosen by Salix Homes to be the main contractors as they admired the collaborative approach that was offered and felt that Wilmott Dixon would care about the residents and their needs.

It was important to Lee Sugdon, Chief Executive at Salix Homes, that residents were involved with development proposals throughout. During the process, 50-60 residents met every month to discuss plans and help shape the future of the development.

Taylor Maxwell worked in partnership with main contractor Willmott Dixon and installer Longworth Building Service to specify and supply the Argeton terracotta cladding for the Canon Green Court project. From the outset, Willmott Dixon knew they wanted red and grey tiles to match the facade of the neighbouring buildings on the site. Terracotta cladding provided the perfect facade for the 11-storey building, with its proven durability and simple support structure. This allowed for a quick installation time, which in turn reduced overall costs. The tiles that were chosen were a single panel, fitted using invisible clips. The tiles are restrained using concealed clips, which are rivetted to vertical rails.





**TAYLOR MAXWELL**



For more information, samples or to speak to one of our product advisors, please call **0203 794 9377** or email [enquiries@taylor.maxwell.co.uk](mailto:enquiries@taylor.maxwell.co.uk)