

A photograph of a modern building facade featuring terracotta cladding and large glass windows. The building has a complex, multi-level design with various window sizes and terracotta panels. The image is used as a background for a promotional graphic.

TAYLOR MAXWELL

Argeton

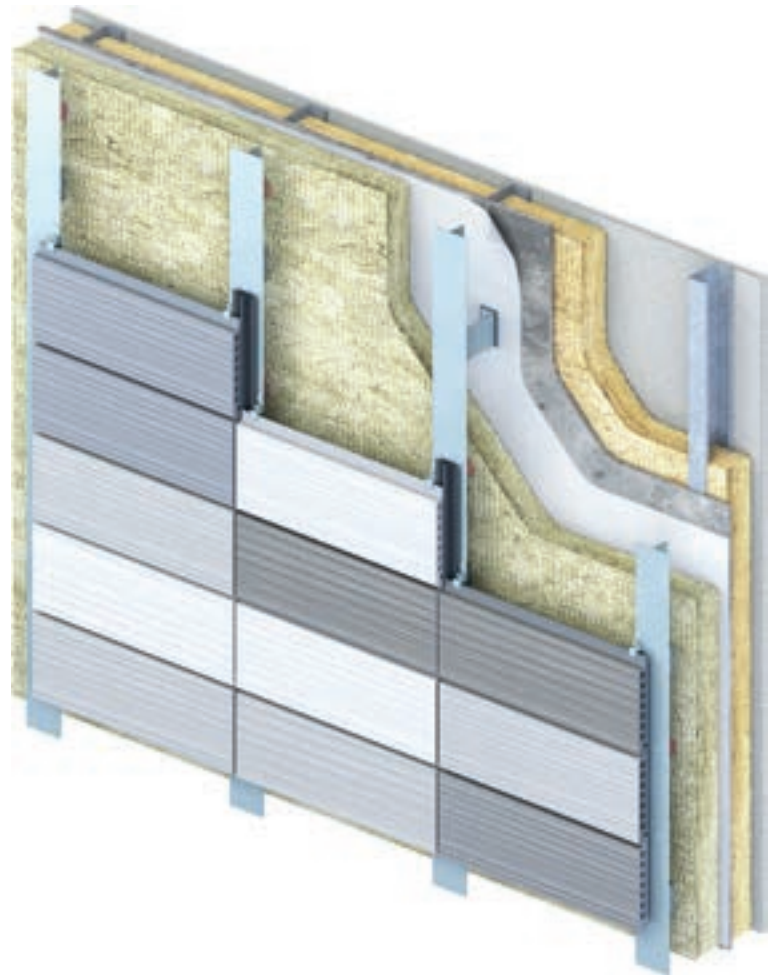
Terracotta Cladding

taylormaxwell.co.uk

Terracotta Cladding

The visual impact of a timeless facade, coupled with the distinctive character of natural terracotta in a ventilating rainscreen, the ARGETON rainscreen system combines the proven durability and natural beauty of clay, with a simple support structure. This enables the designer freedom of expression, and the builder a simple and quick installation process.

Whether in a new building or refurbishment, the CWCT tested ARGETON facade system provides tangible environmental benefits, holding the Environmental Product Declaration in accordance with ISO 14025 and EN 15804 being the European standardised equivalent of a BREEAM accreditation.



Arthouse



Eastside Locks

— Options

ARGETON tiles are extruded to produce plain or grooved twin-skin tiles and baguettes in a range of natural finishes, which can also be glazed. The colours of the terracotta tiles are determined by the raw material (clay), which does not contain synthetic dyes. As a result of this, the tiles will retain their colour and will not fade over time when benchmarked against many other external faced materials.

— Versatile

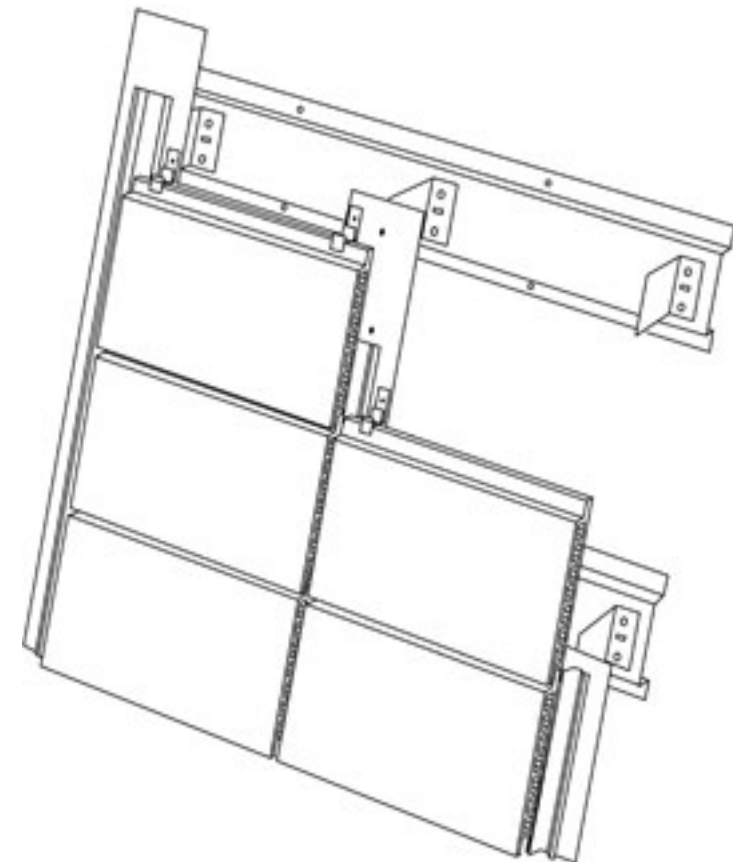
ARGETON tiles are 30–40mm thick and perforated throughout their length to create a system weight of 50kg/m². The profile of the tile is intrinsic to its ability to perform as a rainscreen. Height modules are available from 150–500mm and in module lengths up to 1500mm dependent upon tile module height.

— Installation

The tiles are restrained by anodised clips, which are either riveted or clamped to aluminium support rails, supported either vertically or horizontally to suit your construction. A powder-coated vertical drainage profile is positioned between the tiles and rail to manage water ingress and provide impact resistance to the system. The full system is designed without gaskets, pressure clips or seals that can either deteriorate within the design life of the system, or contribute to 'tile creep' as a result of thermal movement.

— Certified

CWCT and BBA tested with regards to strength and stability, air and water penetration and durability.



Tottenham Court Road



Terracotta Cladding

Colours and Finishes

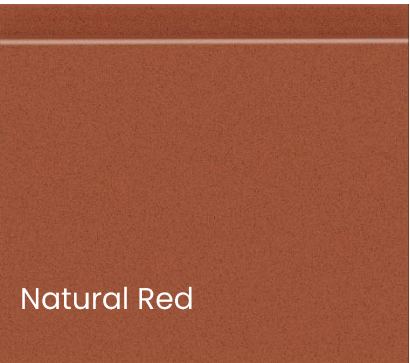
We provide a vast range of colours and finishes to suit your individual project design requirements.

The standard range consists of 10 colours with a further 16 colours as part of our standard plus range. These ranges are made up of a variety of natural and subtle colour options including reds, oranges and earthy browns and creams.

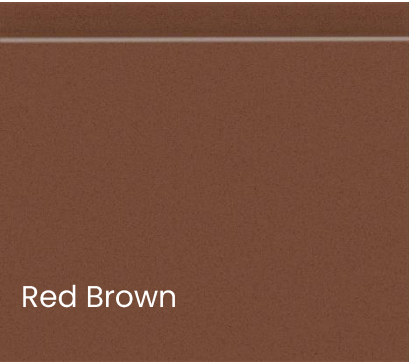
In addition to the standard colours, we can supply glazed finishes in almost an unlimited number of varieties.

Our standard glazed range includes over 30 options however, individual colours and surface structures can be developed on request.

Contact us to discuss your desired colour and finish.



Natural Red



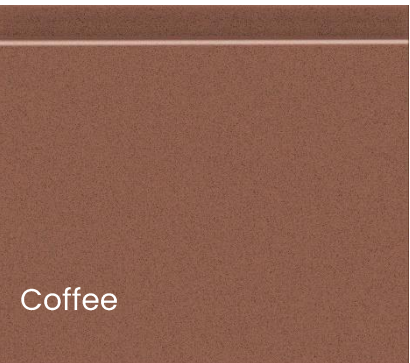
Red Brown



Salmon Pastel Red



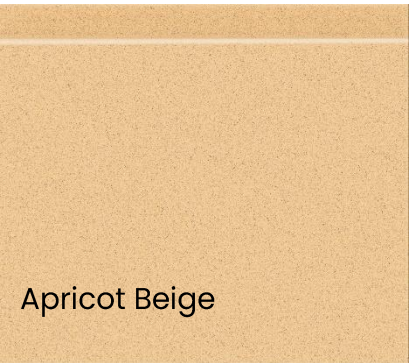
Platinum Grey



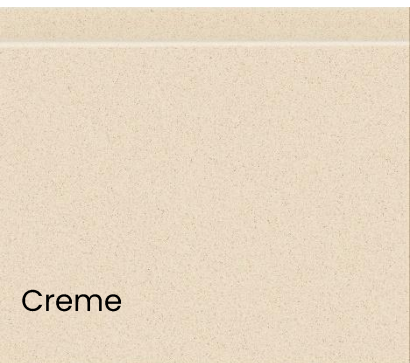
Coffee



Silver Grey



Apricot Beige



Creme

Standard Profiles

- Tampa
- Terzo
- Lineo
- Danza
- Altivo
- Barro
- Argelite
- Ceramic Corner

Finishes

- Standard
- Standard Plus
- Glazed

For the full list of colours and finishes available in each range, contact us today or visit our website.

TAYLOR MAXWELL



For more information, samples or to speak to one of our technical specialists, please call **0203 794 9377** or email enquiries@taylor.maxwell.co.uk