

uniqueTM

natural stone rainscreen
cladding systems

generix

what is generix?

generix is a cost effective portfolio of ventilated rainscreen façade solutions which offers a range of natural stone façade panels.

generix comprises of two systems, **generix lite** and **generix plus**.

generix lite is a cost effective solution which uses a 20 and 30mm natural stone panel with a 90 degree horizontal kerf. The panels are secured to the **generix lite** vertical rail using the patented one piece four way stainless steel clip attached by Tek screws. Neoprene strips eradicate wind rattle and assists impact resistance.

generix lite 5262 adhesive is also applied for additional impact performance.

/contents

▶ what is generix?	2	▶ stone types	20
▶ installation	4	▶ typical details	25
▶ inspiring	6	▶ frequently asked questions	27

generix plus is a unique system which can support up to a 40-50mm thick natural stone panel. The horizontal edges of the panels can be manufactured at either 90 or 45 degrees. This permits the use of an open horizontal joint, which is more effective than a closed joint system for air and thermal movement.

The panels are secured to the **generix plus** vertical rail using the patented two piece stainless steel clip, this is achieved by using the **generix plus** bending tool. The system also benefits from neoprene strips which eradicates wind rattle and assists impact resistance.

Sizes:

Panel sizes for both systems are dependent upon the type of stone and location, please seek advice from a **TM** representative.

Tests:

Testing of the raw material

- **generix lite has been tested to the latest CWCT Standards at Wintech Engineering which included compliance with the NHBC Technical note TN76.**
- **generix plus has 60 year durability to BRE Digest 346 Part 7 and Ultimate destruction test to 5625 pascals.**

/key features of generix

- Fast track construction
- Universal substructure
- Varied panel options
- Cost effective
- Certified to the latest industry standards
- Flexibility in design

W I N T E C H
BUILDING ENVELOPE TESTING



Tiles should be positioned next to the area to be clad and each tile is then supported off the base clips.



Press firmly in position, select an intermediate clip and secure using the specified Tek Screw.



Repeat the process until complete...simple.

/installation

generix lite

generix lite is very quick and easy to install.

The external façade/structure should be surveyed and the vertical tolerance ascertained. The structure to be over-clad must be watertight prior to the installation of the stone rainscreen system as the system is designed as a primary line of defence and not a watertight cladding solution.

Vertical **generix lite** rails cut to size should be wiped clean and any moisture removed before applying 2 lengths of compressible neoprene strips onto each rail. These strips are then cut to length in the correct position by peeling off the self-adhesive backing paper. Rails are lifted into their correct positions and fixed to the brackets using the specified fixings and tightened to the correct torque. It

should be ensured that the correct type of rail, i.e. single, double or corner rail is used in each individual rail location.

Once all railing is complete, the installation of the specified insulation between the rails can commence using proprietary fixings, ensuring all insulation batts/boards are installed tight together with no gaps. Note that the system is designed to have a clear cavity gap of a minimum 39mm between the outside face of the insulation and the rear face of the stone tile when installed.

After applying the **generix lite** neoprene, locate base or intermediate clip into tile slot (Kerf) location and secure with the **generix lite** adhesive and Tek Screw (where specified).

The clip comes as standard in a stainless steel finish, or upon request in black.



generix plus

generix plus is a completely unique system.

As with **generix lite**, the structure to be over-clad must be watertight prior to the installation of the stone rainscreen system, as the system is designed as a primary line of defence and not a watertight cladding solution.

It should be ensured that the correct type of rail i.e. single, double or corner rail is used in each individual rail location. Vertical **generix** FRV-03 rails should be cut to size, wiped clean and compressible neoprene strips applied onto each rail. They are then lifted into their correct positions and fixed to the brackets using the specified fixings and tightened to the correct torque.

The installation of the specified insulation between the rails can commence after all rails are installed. It is important to use proprietary fixings and ensure all insulation batts/boards are installed tight together with no gaps. The system should have a clear cavity gap of a minimum 39mm between the outside face of the insulation and the rear face of the stone tile when installed.

After applying the **generix plus** neoprene, locate base or intermediate clip into tile slot (Kerf) location and secure with the **generix plus** bending tool.

Tiles should be positioned next to the area to be clad and each tile is then supported off the base clips. The bottom section of the stone **generix plus** tile will lip over the upstand in the top section of the clip. Locate firmly in position, select an intermediate clip and secure using the **generix plus** bending tool.



/inspiring



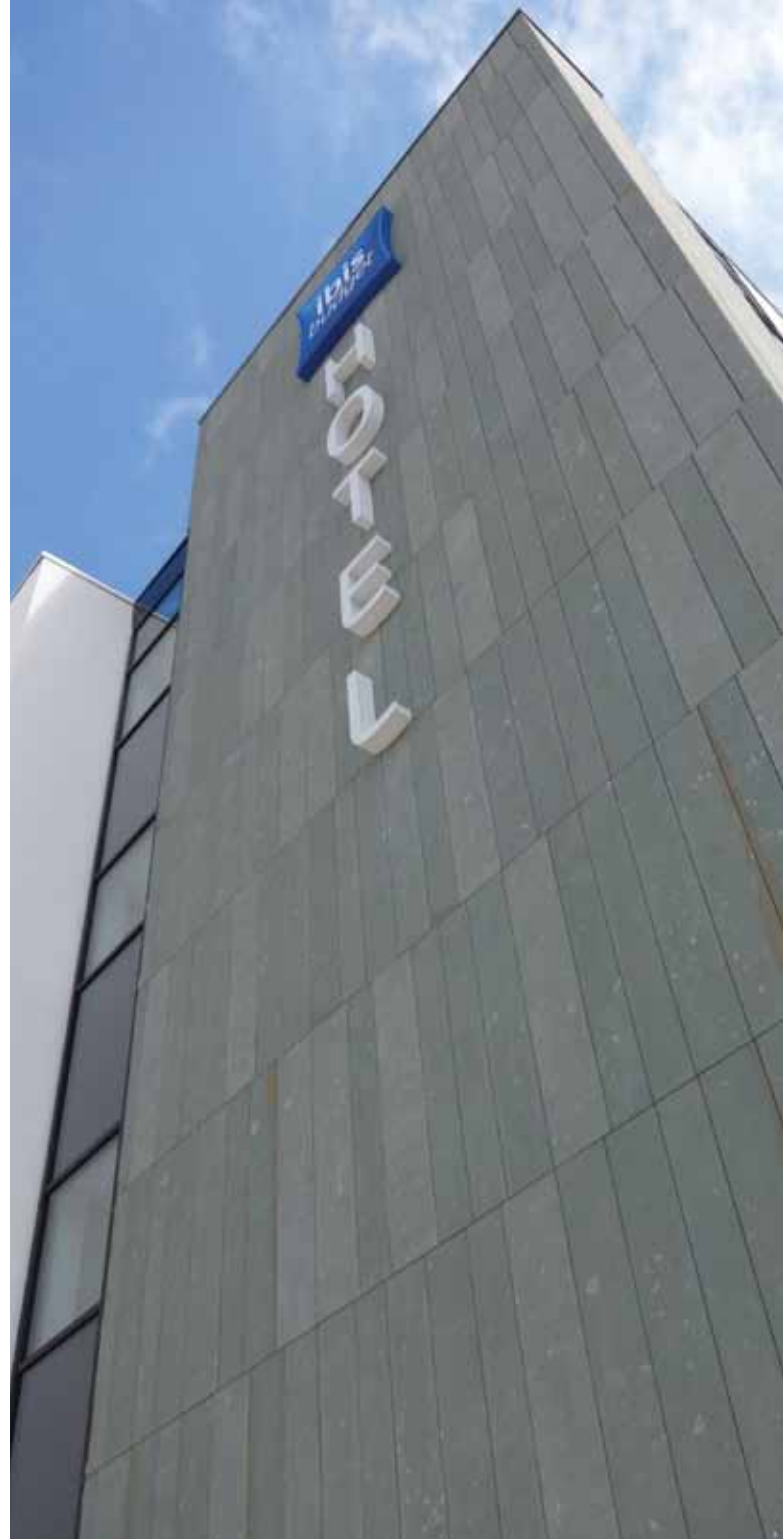


Student accommodation London Road, Brighton

/inspiring



generix



Ibis Hotel, Edinburgh

/inspiring



Deaconess House, Edinburgh



/inspiring



Riverside, Dundee

/inspiring

A photograph of a Premier Inn hotel building. The building has a modern facade with a mix of dark grey and reddish-brown panels. The Premier Inn logo, featuring a stylized white bird and three yellow stars, is mounted on the reddish-brown section. Below the logo, the words "Premier Inn" are written vertically in large, white, sans-serif letters. To the left of the main building is a glass-walled structure. A street lamp is visible in the foreground.

Premier Inn

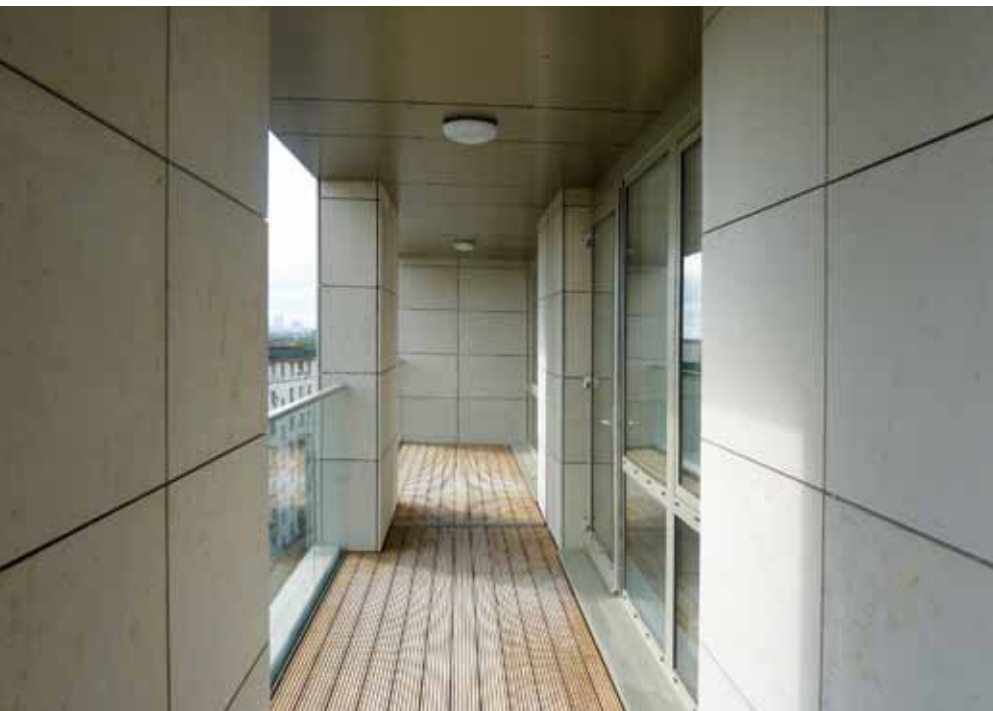


Premier Inn, Salford

/inspiring



generix



Woodberry Down, London



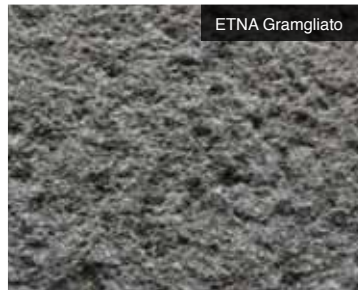
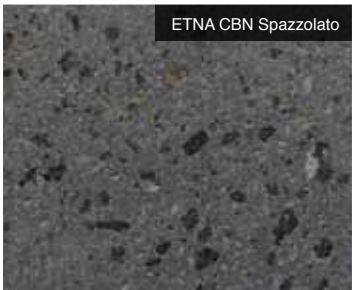
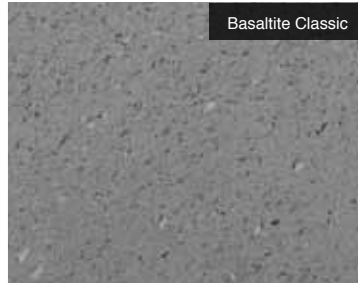
/inspiring



Green Lanes, London

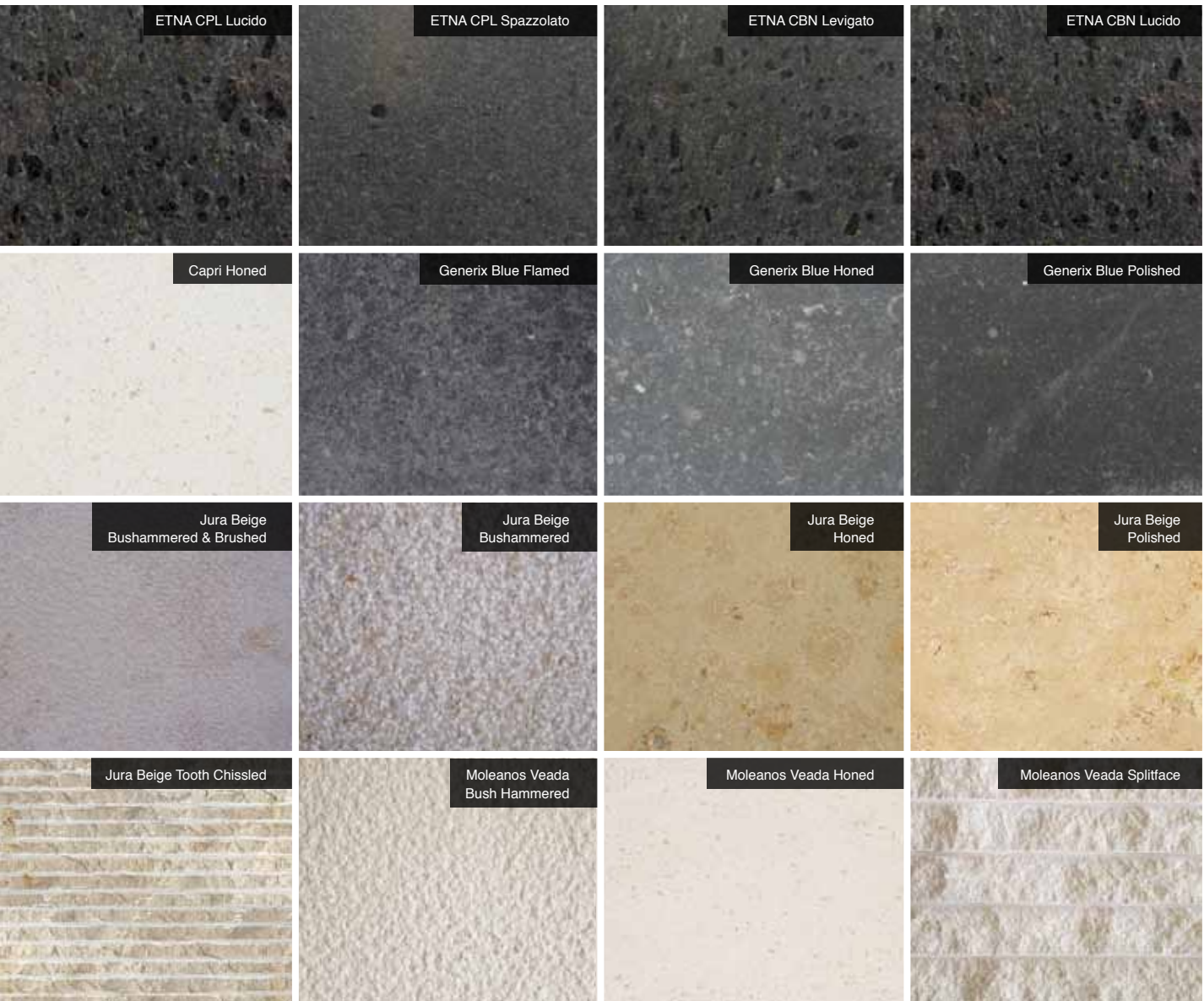
/stone types

basalt
range >



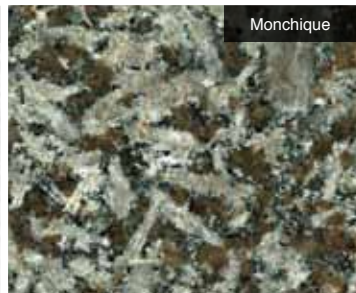
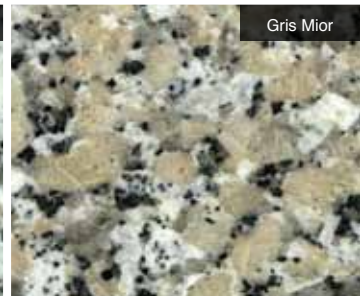
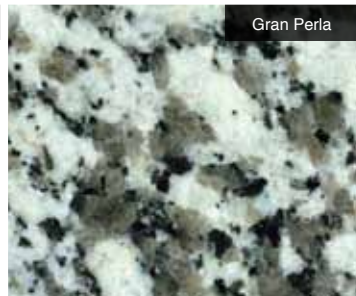
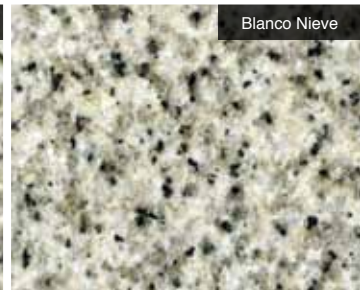
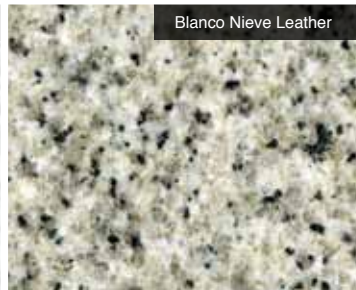
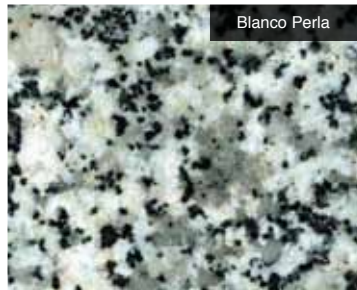
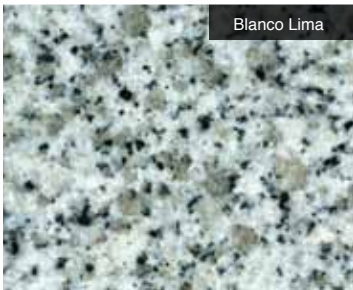
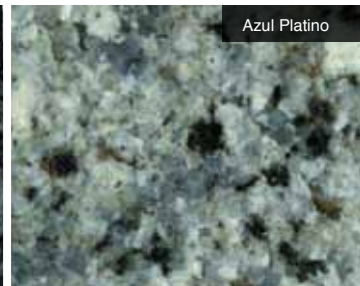
limestone
range >

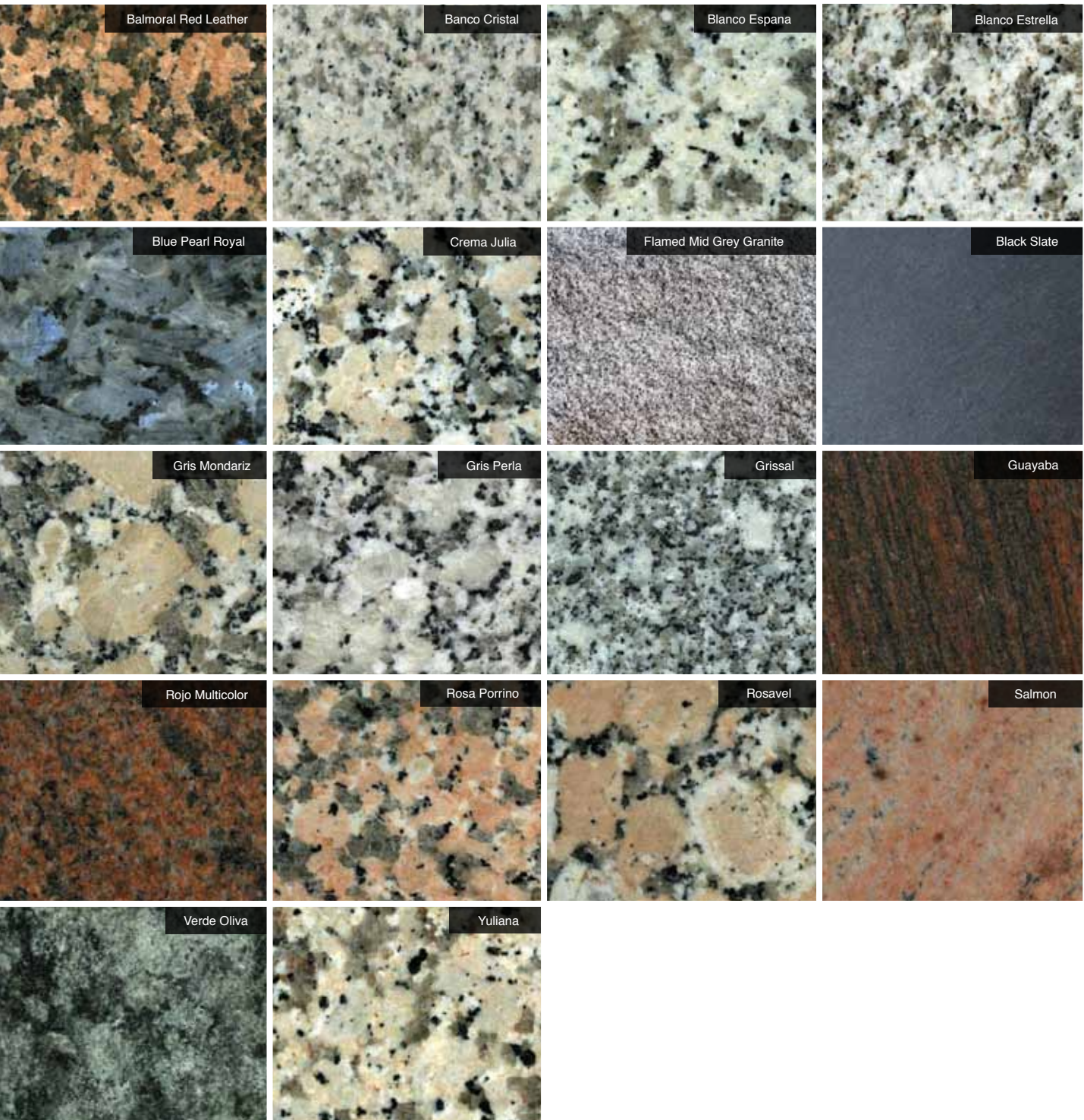




/stone types

renaissance
range >



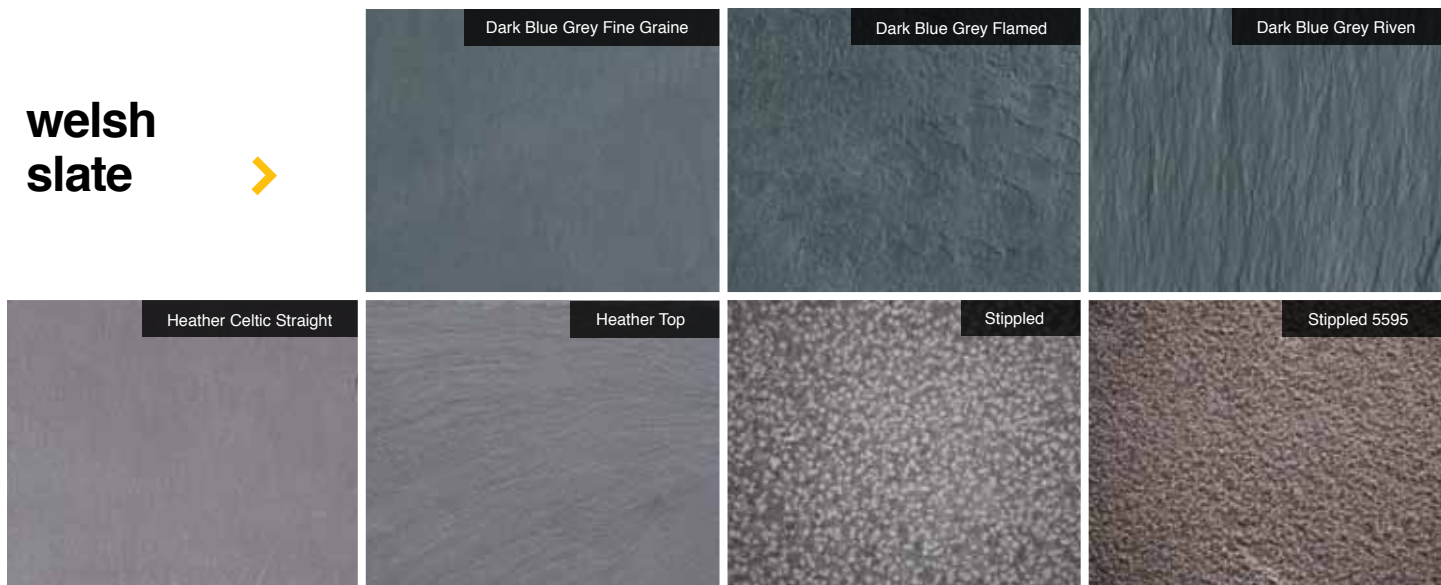


/stone types

sandstone range >

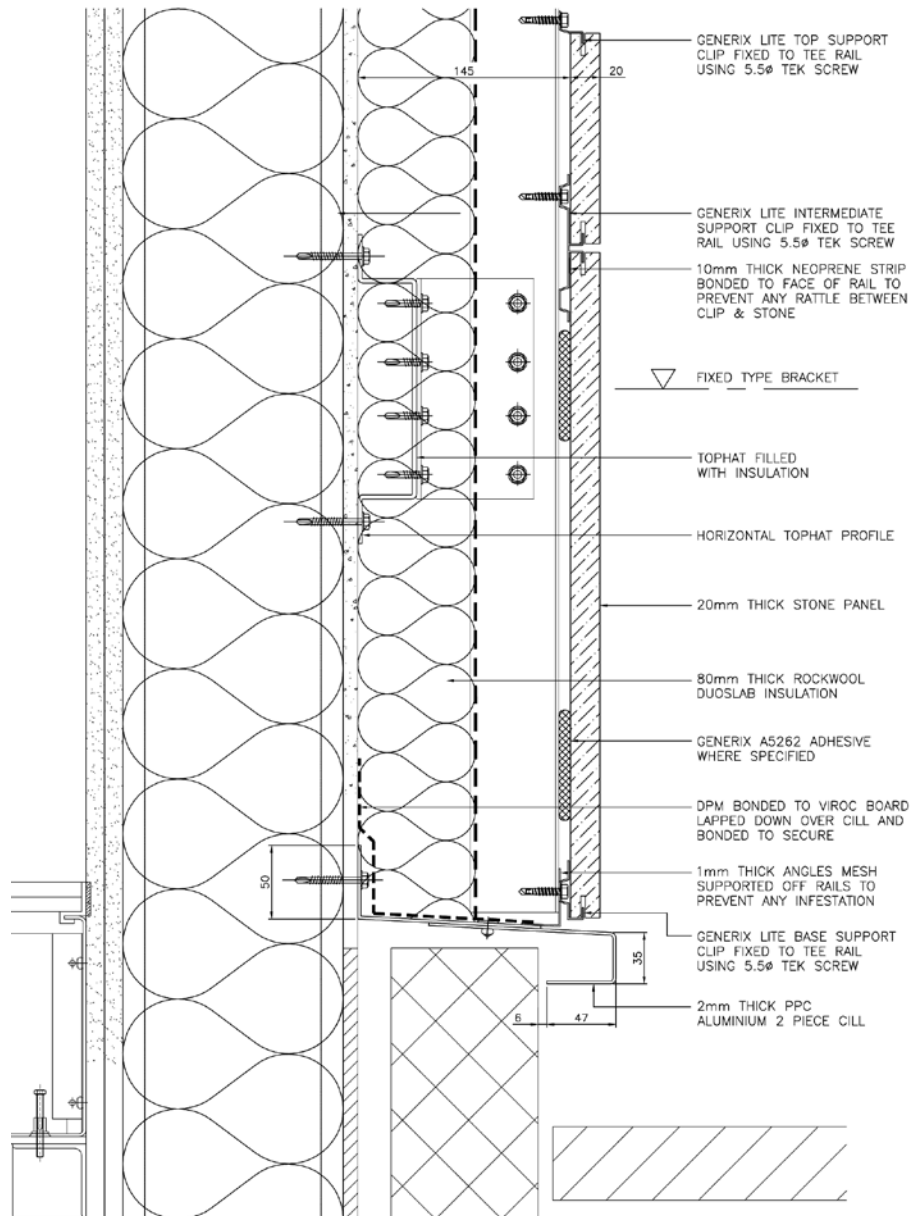


welsh slate >

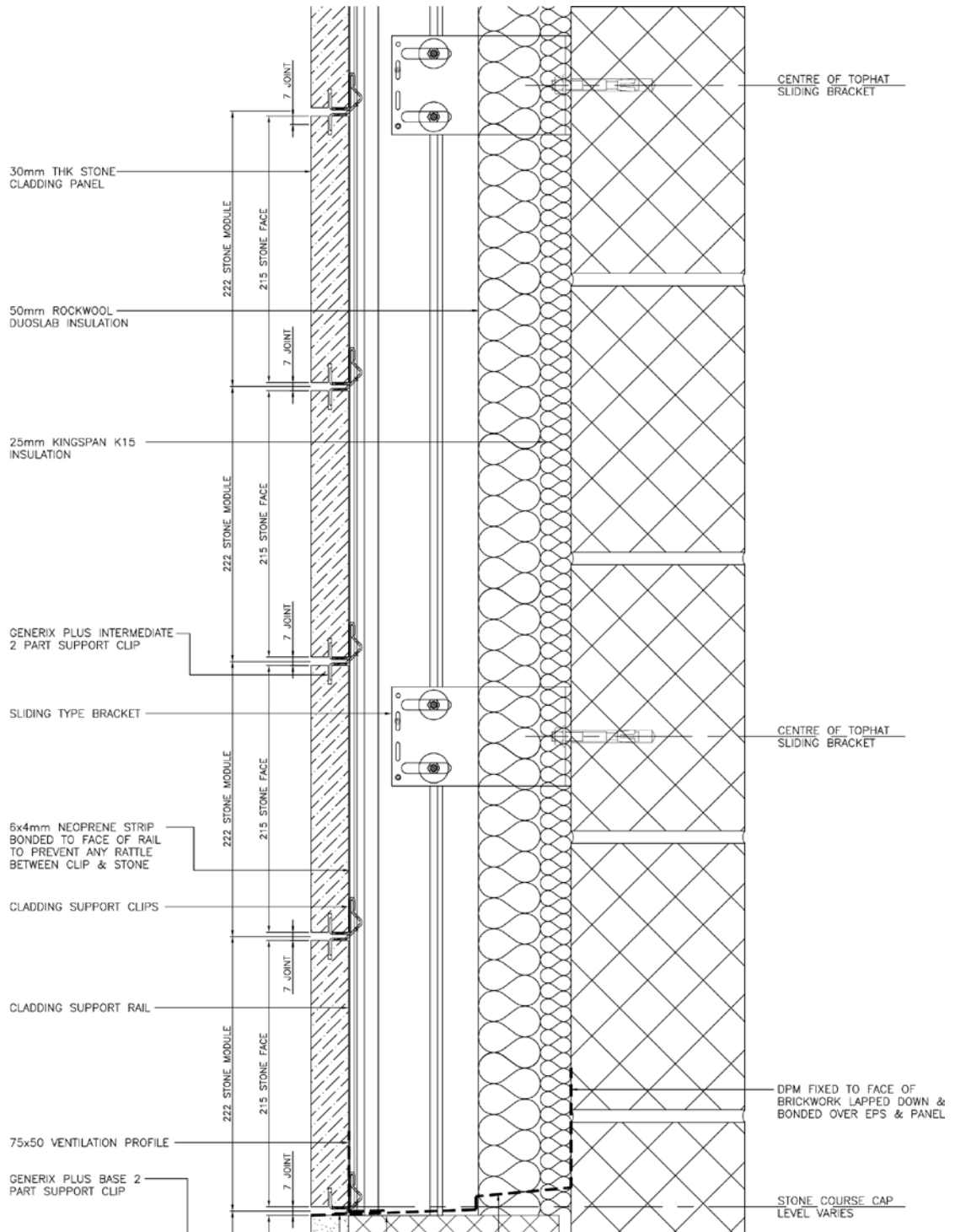


/typical details

generix lite



generix plus



/frequently asked questions

What thickness is the stone?

The **generix lite** system is available in thicknesses of 20 and 30mm, and the **generix plus** system is available in thicknesses of 30-50mm. Please contact our team who can advise which system is best suited to the stone type required.

What are the standard sizes of the stone panels?

This depends upon the stone type, the standard size is 1200mm long by 600mm high. If larger panel sizes are required please contact our team.

Can the system be installed vertically? i.e. in portrait rather than landscape?

Yes.

Is the system tested?

The **generix lite** system has been fully tested to current CWCT standards at Wintech Engineering, which includes compliance with the NHBC technical note TN76. The system also has a letter of satisfaction from Arup Facades. On the most popular stone which is 20mm Jura limestone it has a BREEAM A+ Excellent rating.

Is the system quicker to install than traditional handset stone cladding?

Yes, approximately 2.5/3 times quicker to install.

What is the life expectancy of the system?

generix plus has 60 years durability to BRE Digest 346 Part 7.

Can Architectural features be incorporated within the system in stone?

Yes fabricated specials are available.

What are the joint sizes?

Typically 6mm vertical and horizontal, the horizontal is always 6mm and cannot be adjusted, however the vertical can be closed up.

Can we supply cills and copings in the same stone with the system?

Yes.

Can we supply the system with curved (radius) panels?

Yes. Please consult our team for further details.

/contact

facades@taylor.maxwell.co.uk

feeling inspired?

contact your nearest facades solutions provider

Taylor Maxwell Glasgow
3000 Academy Park, Gower Street, Glasgow, G51 1PR
T: 0141 418 0300 F: 0141 418 0500

Taylor Maxwell Edinburgh
1a Clerk Street, Loanhead, Edinburgh, EH20 9DP
T: 0131 448 2020 F: 0131 448 2720

Taylor Maxwell North East
Unit 16, Bankside, The Watermark, Gateshead, NE11 9SY
T: 0191 460 4736 F: 0191 461 1115

Taylor Maxwell Leeds
Unit 1, Bramley Grange, Skeltons Lane, Leeds, LS14 3DW
T: 0113 204 3220 F: 0113 204 3225

Taylor Maxwell Manchester
Carlton House, 18 Albert Square, Manchester, M2 5PE
T: 0161 832 5213 F: 0161 832 0926

Taylor Maxwell Nottingham
9 The Triangle, Enterprise Way, ng2 Business Park, Nottingham NG2 1AE
T: 0115 969 9351 F: 0115 986 1940

Taylor Maxwell Birmingham
6080 Knights Court, Solihull Parkway, Birmingham Business Park, B37 7WY
T: 0121 329 1440 F: 0121 779 5593

Taylor Maxwell Cardiff
13 Cathedral Road, Cardiff, CF11 9HA
T: 02920 374 545 F: 02920 238 542

Taylor Maxwell Bristol
Taylor Maxwell House, The Promenade, Clifton, Bristol, BS8 3NW
T: 0117 923 7083 F: 0117 973 8255

Taylor Maxwell Barnet
Cosmo House, 53 Wood Street, Barnet, EN5 4BS
T: 0208 440 0551 F: 0208 440 0552

Taylor Maxwell Witham
The Matchyns, Rivenhall End, Witham, CM8 3HA
T: 01376 515 055 F: 01376 515 066

Taylor Maxwell Leatherhead
Ashcombe House, 5 The Crescent, Leatherhead, Surrey KT22 8DY
T: 01372 388 366 F: 0118 930 2888

Taylor Maxwell Winchester
Winchester House, Basingstoke Road, Kings Worthy, Winchester, SO23 7QF
T: 01962 718 240 F: 01962 715 983



**Taylor Maxwell House
The Promenade
Clifton
Bristol BS8 3NW**

**T: 0117 973 7888
E: info@taylor.maxwell.co.uk**

taylormaxwell.co.uk/facades