

TAYLOR MAXWELL

# Masonry

Reconstituted cast stone, natural stone, walling stone and architectural masonry

[taylormaxwell.co.uk](http://taylormaxwell.co.uk)

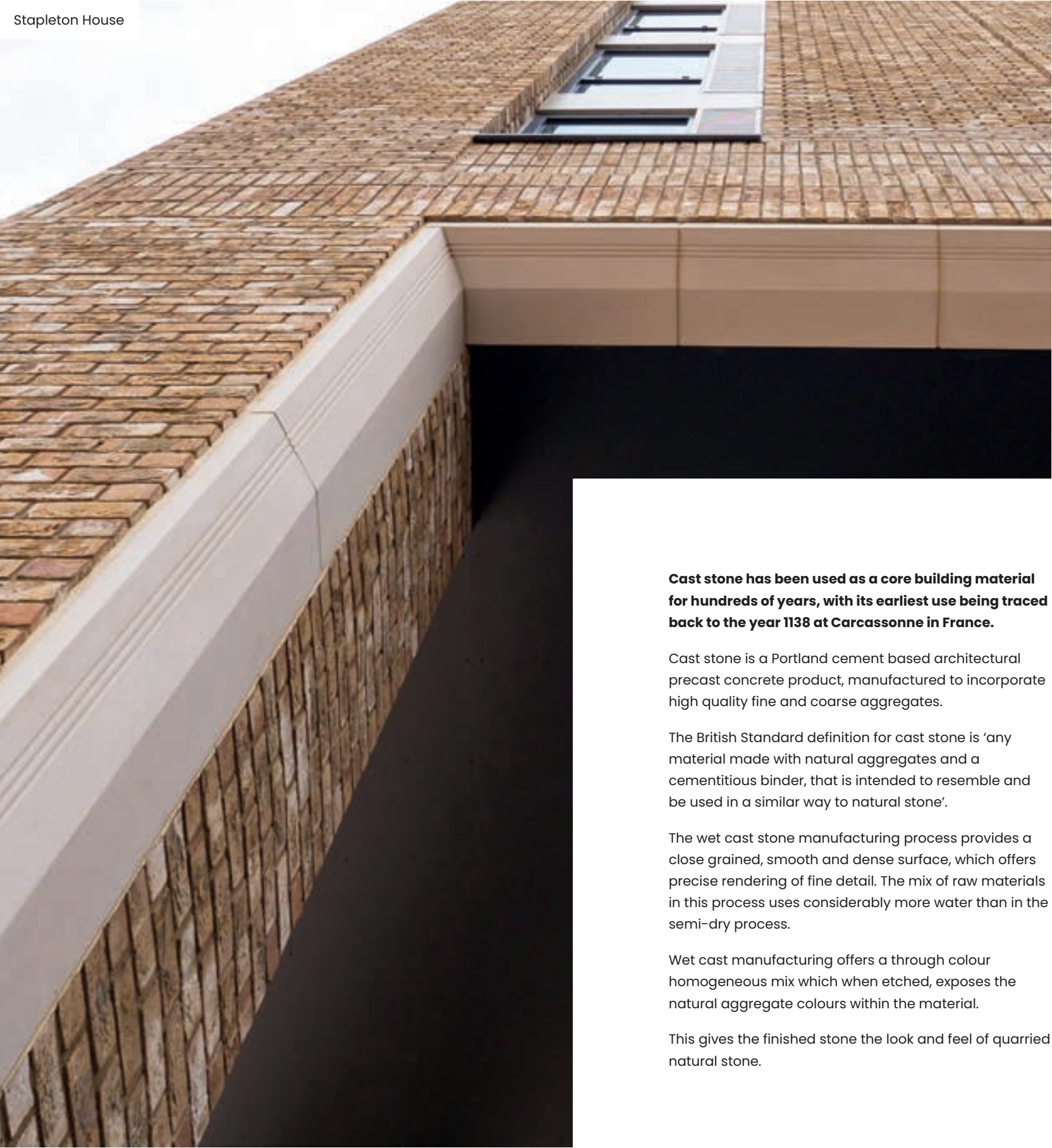


# Cast Stone



Royal Ballet School

Stapleton House



**Cast stone has been used as a core building material for hundreds of years, with its earliest use being traced back to the year 1138 at Carcassonne in France.**

Cast stone is a Portland cement based architectural precast concrete product, manufactured to incorporate high quality fine and coarse aggregates.

The British Standard definition for cast stone is ‘any material made with natural aggregates and a cementitious binder, that is intended to resemble and be used in a similar way to natural stone’.

The wet cast stone manufacturing process provides a close grained, smooth and dense surface, which offers precise rendering of fine detail. The mix of raw materials in this process uses considerably more water than in the semi-dry process.

Wet cast manufacturing offers a through colour homogeneous mix which when etched, exposes the natural aggregate colours within the material.

This gives the finished stone the look and feel of quarried natural stone.



# Step by Step Process of Manufacture



## — Design

Architectural concepts and design intent are transformed into detailed stonework CAD drawings with full consultation and consideration provided.



## — Moulds

Bespoke moulds are constructed, designed to maintain the required level of detail to achieve crisp, sharp arrises to every stone.



## — Casting

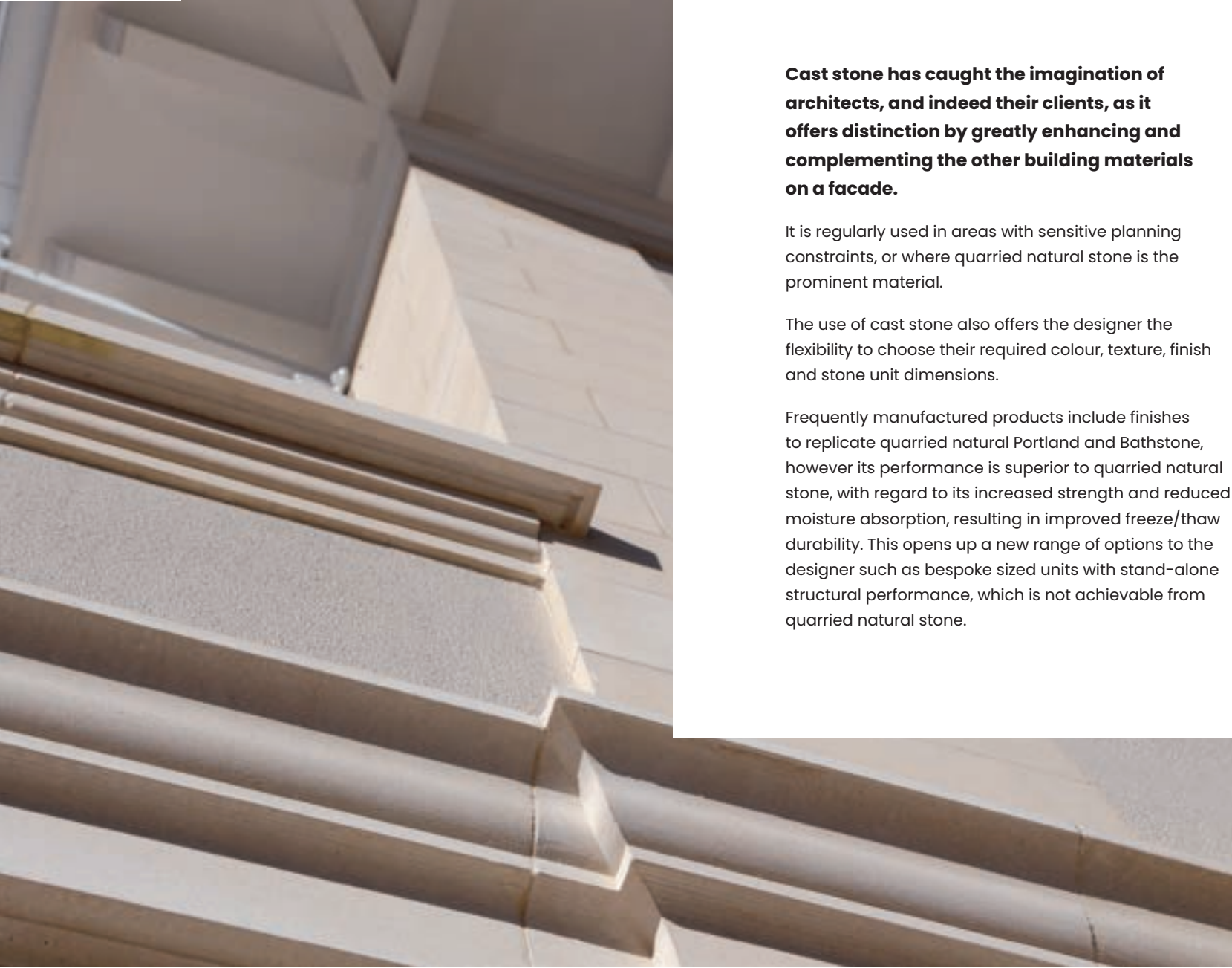
Moulds are filled and the material compacted thoroughly, with reinforcement and cast-in fixings added if specified for either handling or full structural purposes.



## — Finishing

Moulds are carefully stripped from the stones, which are then dressed and finished ready for curing.

Windlesham Court



**Cast stone has caught the imagination of architects, and indeed their clients, as it offers distinction by greatly enhancing and complementing the other building materials on a facade.**

It is regularly used in areas with sensitive planning constraints, or where quarried natural stone is the prominent material.

The use of cast stone also offers the designer the flexibility to choose their required colour, texture, finish and stone unit dimensions.

Frequently manufactured products include finishes to replicate quarried natural Portland and Bathstone, however its performance is superior to quarried natural stone, with regard to its increased strength and reduced moisture absorption, resulting in improved freeze/thaw durability. This opens up a new range of options to the designer such as bespoke sized units with stand-alone structural performance, which is not achievable from quarried natural stone.

## — No Pigmentation

Our wet cast standard Portland and Bathstone finishes contain no pigmentation, and are solely the natural colours of the aggregates within them.

## — Superior Performance

Reconstituted cast stone's performance is superior to quarried natural stone with regard to its increased strength and reduced moisture absorption, resulting in improved freeze/thaw durability.

## — Highest Quality

Due to the use of the highest quality handmade moulds, the finished product presents the designed level of precise, sharp detail.

## — Additional Options

A new range of options is available to the designer such as bespoke sized units with stand-alone structural performance, which is not achievable from quarried natural stone.



# Natural Stone



Edinburgh University

**Taylor Maxwell are a leading supplier of natural stone for the facade and landscaping industries. With a comprehensive range covering all stone types, our portfolio has something to suit all visual requirements.**

Many of the quarries we partner with have been actively working since the 1800's, and offer stone rich in colour, character and heritage with adequate reserves. Using locally sourced stone on your planned development from these well-established quarries located across the UK, not only provides a sense of character in keeping with the local vernacular, but also provides a sustainable approach to the construction of your scheme.

Our stone range includes Basalt, Granite, Limestone, Marble, Pennant, Quartzite, Sandstone, Slates, Travertine and Yorkstone.

Energy is only used for the extraction of the natural stone from an open surface quarry and then processing it further. This energy usage is relatively low when compared with other building materials often produced in a factory environment, making it a more environmentally friendly option.

Recent research suggests that the total calculated cost of a natural stone building over a 30-year period is considerably less than many other buildings when comparing the short-term material costs, bench-marked against the higher maintenance costs often associated with more modern types of facades.

Smooth, tooled, split face, pitched face, rumbled, picked, broached and many more finishes are available, ensuring the closest match to the client's brief can be found.

Consistency of stone supply is also offered for large schemes or multi-phased developments.



Sussex Court

Kinnear Road





# Walling Stone

**Reconstituted walling stone is a popular choice with local developers and builders, and is widely accepted by planners as a durable, attractive and cost-effective alternative to natural stone.**

Reconstituted walling uses real stone aggregates sourced from the same quarries as those used for natural stone walling. This gives the product the ability to replicate natural stone visually and characteristically.

Suitable for load-bearing and non-load-bearing use, the hydraulic press manufacturing process results in low water absorption, meaning the product is extremely durable and will stand the test of time.

Almost all stone types are available to match the contextual style of the locality including buff sandstones, red sandstones, cream to gold limestones and ironstone, with a range of sizes and finishes to suit the design brief. The moulds, which are taken from natural stone, recreate the unique and subtle textures and characteristics of the raw material. The wide range of authentic shades match most original natural stones whilst the manufacturing process allows for a dimensional accuracy that facilitates impressive build speeds.



Daniel Hill



**If natural stone is the preferred option for your project, we have close working relationships with all major UK quarries and are able to source any type of natural stone walling or masonry required for your development.**

We work closely with developers, contractors, architects and local authorities to source the appropriate material for your residential or commercial building project. We are able to offer guidance when it comes to matching existing buildings and identifying the origin of materials already built within any given area.

As this is a natural product formed over thousands of years, then quarried from within the UK, natural stone walling offers an incredibly durable walling or masonry product and makes an excellent option for a robust and aesthetically pleasing facade.

We are committed to providing high-quality stone products, manufactured to your specification and delivered to site to meet your build programme. We will provide full take-off services based on your drawings, samples for planning and client sign-off, and cost-effective quotes to meet your budgetary requirements. meet your budgetary requirements.

Sussex Court



# Architectural Masonry



Mary Seacole House

**Architectural masonry provides a decorative facing concrete block with design quality and dimensional accuracy. It is a structural material which can be used as part of the internal or external leaf, providing a clean, maintenance-free solution.**

Manufactured from a mix of top quality limestone aggregates and cements, architectural precast concrete masonry is a modern, cost-effective building material, that is extremely durable.

This material is available in a wide variety of colours and finishes including polished, glazed, fair faced, split and textured, which is often used in healthcare, education, commercial and residential developments.

A range of standard units are available, however bespoke elements can be created with each hand moulded by experienced craftsmen to match your designs.





# Types of Finish

## — Fair Face

These precise and smooth blocks are used to create large natural smooth surfaces and are offered at competitive price points compared to other materials, for example render. These smooth blocks, can also be mixed with other more textured blocks, to produce a striking contrast on a building's facade.

## — Shot Blasted

This production process exposes the inner aggregate of the material, which creates a matt texture with a flat surface. The degree of erosion can be developed to accommodate the required aesthetic.

## — Split Face

The split face stone finish is desirable as it provides natural texture and stratification that is hard to duplicate in a man-made product. These cast stone blocks are individually split down the middle to produce a face that replicates hand hewn stone, with each piece offering a unique finish.

## — Burnished

The burnished face finish reveals the beauty of the natural aggregates and is a popular choice for projects where an understated aesthetic and reduced glare are desired.

## — Polished

Selected natural aggregates are mixed and polished to create a wide range of colours and variations, replicating the rich textures associated with marble and granite finishes.

Fair Face



Shot Blasted



Split Face



Burnished



Polished





# Sussex Court

Natural stone & walling stone



**Sussex Court is an exclusive collection of luxurious homes, set within the conservation area of the Duchy of Lancaster Estate in North Yorkshire. With prices starting at circa £1m, each of the new houses have been designed with impressive facades and elegant exteriors and boast high specification interior design, exclusive features and spacious gardens.**

Set just outside the beautiful town of Harrogate, recently voted the third happiest place to live in the UK, the Duchy Estate masterplan was designed by architects Wildblood Macdonald in conjunction with Amec Foster Wheeler. The scheme of 160 houses at Sussex Court was developed to provide an outstanding design standard, that compliments the nearby town, and offers a varied range of housing types amidst a generously landscaped rural setting.

Working closely with main contractors Linden Homes, part of the Galliford Try Group, Taylor Maxwell were pleased to assist with the specification and supply of a range of locally sourced natural stone products to this development. A selection of the high-quality homes have been built using natural stone walling for their exterior facades, and the majority of boundary walls and copings have been built using drystone walling sourced within 10miles of the scheme, adding to the local heritage of the development.

Natural stone lends itself perfectly to providing a unique and individual characteristic to a property, offering a hand-crafted touch and an overall feeling of high quality craftsmanship. Its durability as a construction product offers a high quality, long-term and low maintenance option that, rather than fading or showing aggregate with age, actually improves over time. The textural quality of the locally sourced stone permits the seamless integration of the new development within its rural environment.

The design of Sussex Court has successfully merged the characteristics of the local architecture, integrating the long-standing heritage and notable historic style, whilst providing easy access to the charming facilities that Harrogate has to offer. The development was formed to respect the wider landscape setting and intentionally looks to create a long term green edge to the historic spa town.





# West Hendon

Cast stone

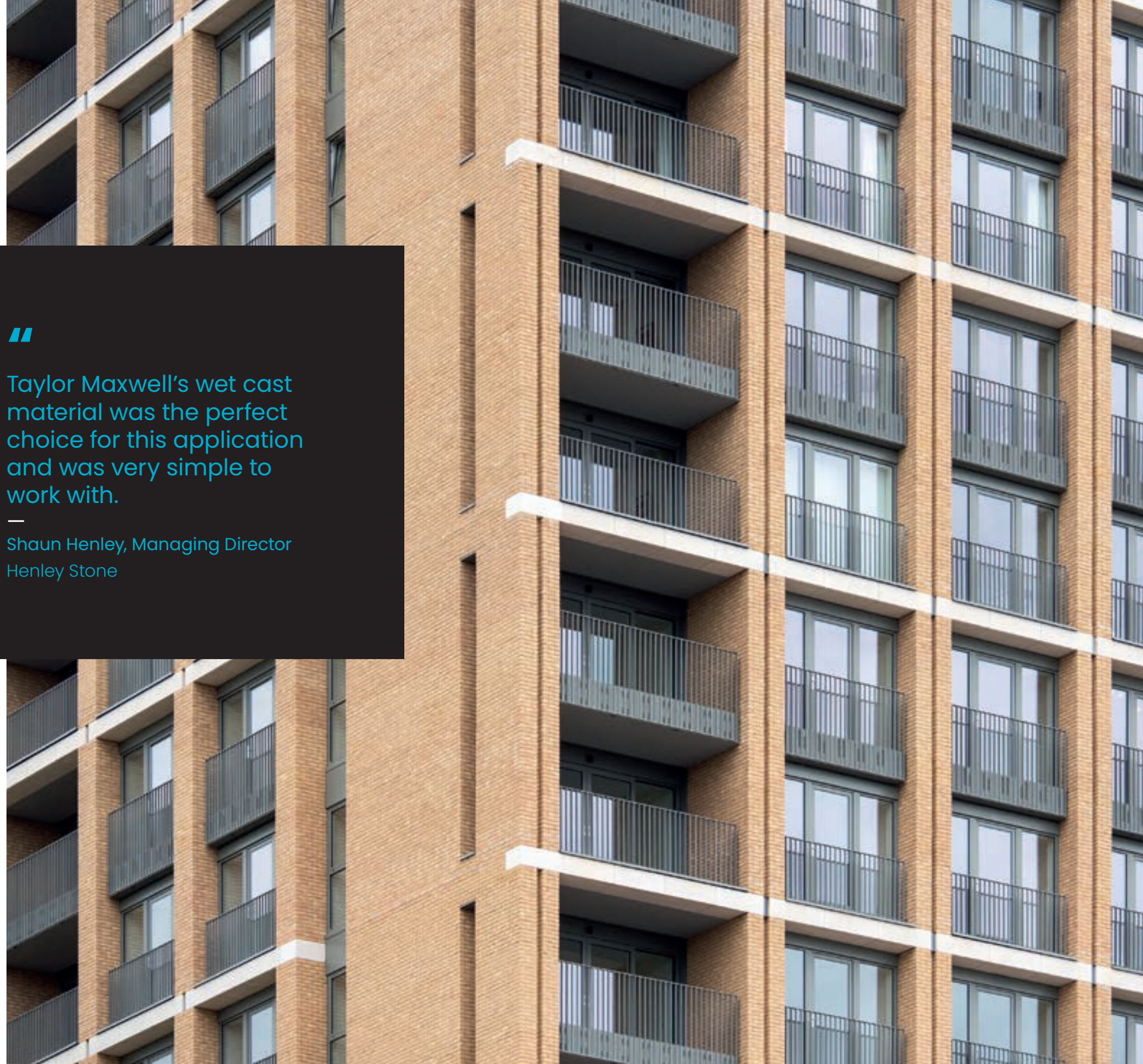
See more projects at [taylor-maxwell.co.uk/projects](https://taylor-maxwell.co.uk/projects)

CAST STONE BANDING



Hendon Waterside is a flagship Barratt London residential regeneration scheme in North London. The project itself is creating 2,000 new homes set in 170 hectares of beautiful grounds and gardens, which will provide residents with lakeside living within 30 minutes of Central London. The standout building on the site is the Vista building, rising some 26 storeys, with views across the Welsh Harp reservoir and the city beyond.





“

Taylor Maxwell’s wet cast material was the perfect choice for this application and was very simple to work with.

— Shaun Henley, Managing Director  
Henley Stone



Shaun Henley, Managing Director of Henley Stone, the installer on the project advised, “Many of the buildings have Portland wet cast stonework balconies and banding at floor levels around their perimeter. As stonework installers, we were pleased that Vobster Cast Stone (part of the Taylor Maxwell Group) was selected as the stonework manufacturer by both Barratt London and the architect Allies and Morrison.”

“Having worked with Vobster for many years now, we knew we would be installing what we consider to be the very best wet cast material available on the market. This proved to be the case yet again, as our masons would frequently praise the accuracy and quality of the Vobster product.”

Shaun continued “There were some very complex design issues which Vobster resolved with Barrett London in good time for us to install the stonework without interruption or delay. Their wet cast material was the perfect choice for this application and was very simple to work with. It provides a fantastic finish and contrasts extremely well with the adjacent bricks, metalwork and glass.”

“Due to significant design restraints, we needed the supplier to be able to manufacture the material to very tight tolerance levels, and to be able to keep up with the high pressure demands of supplying to such an important flagship project. We are looking forward to working with them again on the next project and will continue to recommend them for projects to clients and architects without hesitation.”







**TAYLOR MAXWELL**

For more information, samples or to speak to one of our product advisors, please call **0203 794 9377** or email [enquiries@taylor.maxwell.co.uk](mailto:enquiries@taylor.maxwell.co.uk)

The latest version of this brochure in digital format is available on our website. Details provided are subject to changes. If you require further information, please contact us. Last updated August 2021.