



TAYLOR MAXWELL

# Fibre Cement Cladding

Fibre Cement Cladding

[taylormaxwell.co.uk](http://taylormaxwell.co.uk)



# Fibre Cement Cladding

## This fibre cement cladding range has both European technical approval and CWCT testing.

Comprised of a combination of reinforcing fibres, additives, cement and water, these boards are available in standard sizes including 3050mm x 1220mm x 8mm and 2520mm x 1220mm x 8mm, along with the option to create made-to-measure alternatives for individual projects. This range of fibre cement panels hold an A2 fire rating, in accordance with **EN13501-1**.

Five colour ranges are available, with options that include subtle natural shades, and almost all RAL colours can be produced. Fibre cement panels are suitable for a new construction or refurbishment project. In the case of a renovation, fibre cement panels offer an advantage due to their reduced thickness, meaning thicker insulation layers can be applied.

Fibre cement cladding panels combine seamlessly with a number of other facade materials, including facing bricks and slate and can be installed using a variety of systems:

### — Screws

Panels can be attached with screws (wooden or metal) to the support structure.

### — Rivets

Panels can be attached to the metal support structure using rivets.

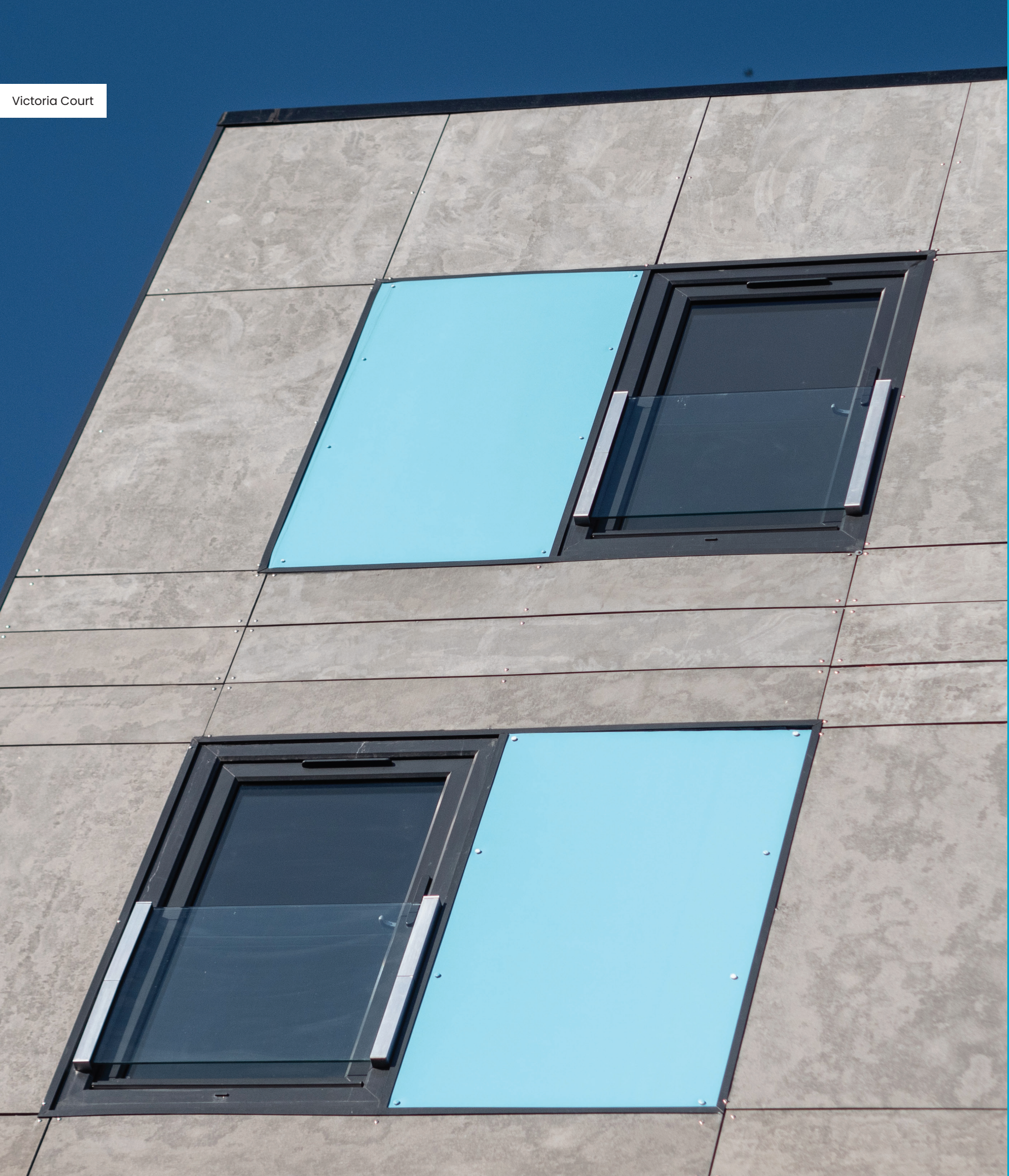
### — Invisible mechanical fastening

Panels can be installed using an invisible mechanical fastening system, where the backs of the panels are fitted with fastening points, in which panel hooks are placed with a tension-free anchor.

The surface of fibre cement boards may show variations in tone, appearance and coloured spots/flecks which adds to natural aesthetics of the material. The porosity allows the panels appearance to change with wet weather conditions and when dried out return to the original colour/tone. Each panel is naturally unique, and it is recommended that over large projects, panels are mixed from pallets.



Victoria Court





# Fibre Cement Cladding

### Colours and Finishes

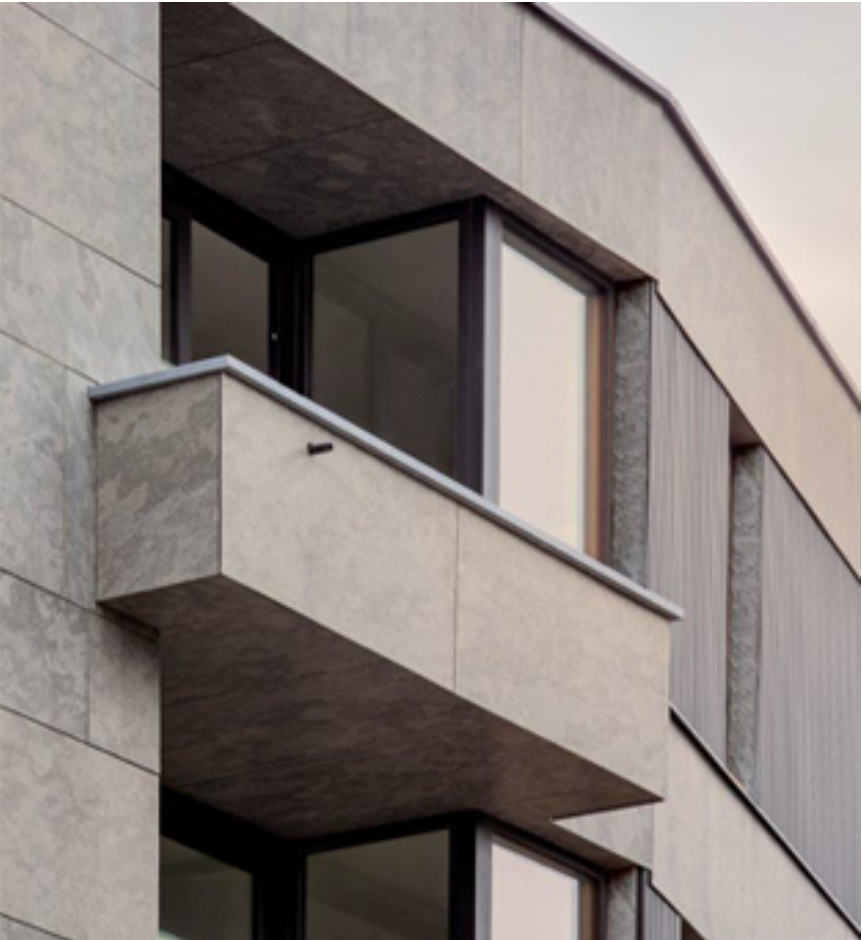
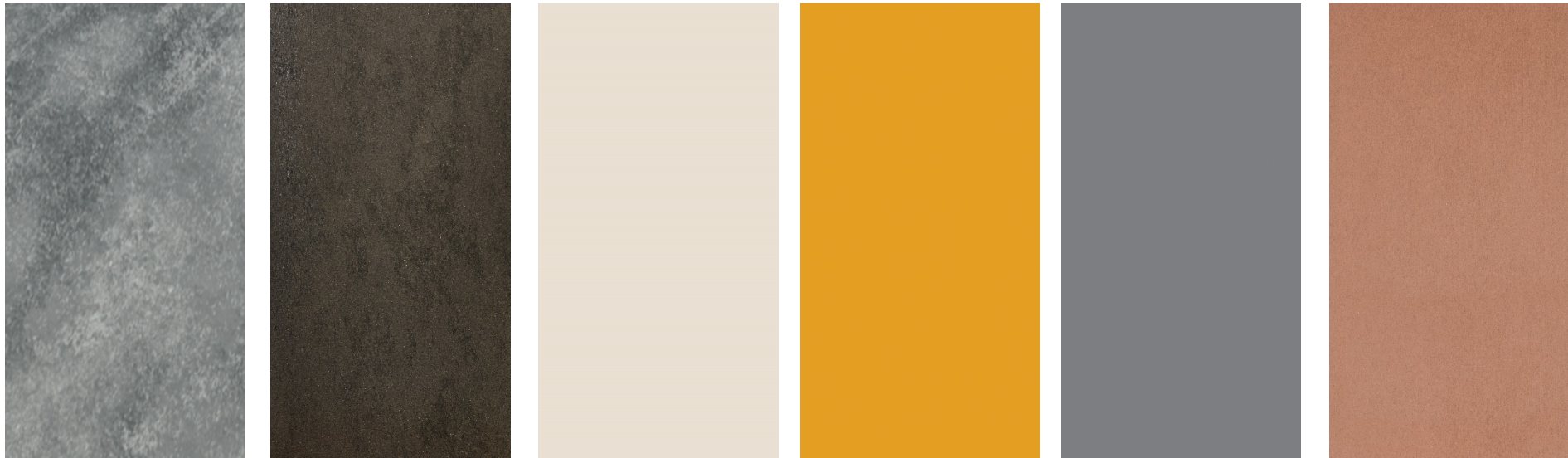
**Puro Plus** facade panels are the naturally finished fibre cement material which is not given a coating. The finish is slightly sanded and alters in colour with different weather conditions to reveal different shades of natural grey.

**Decoboard Pure** facade panels are available in three colours; Gale, Burst and Thunder. These boards have the same natural cloudy finish, similar to PuroPlus boards, but are finished with a transparent coating offering three grey colours. The edges are not coated in the same colour and need to be sealed with a protective finish prior to installation.

**Decoboard Classic** and **Elements** facade panels have three coats of UV resistant acrylic paint applied to the front face. The Classic range comprises eight standard colours with a further six colours available in the Elements range. It is also possible to manufacture any RAL or NCS colours where required.

**Ornimat Essential** and **Elements** facade panels are finished with a UV resistant two-component polyurethane paint with a matt finish. The board edges are squared and coloured with the same painted finish, allowing the finished facade colours to be uniform from all angles. The Essentials range has 12 standard colours, with a further six in the Element range. It is also possible to manufacture any RAL or NCS colours where required.

**Colourmat Classic** and **Scripto** facade panels are impregnated with a water repellent transparent protective layer, which protects the panel against water and dirt. Both the Colourmat and Scripto ranges are available in 12 standard appearances, with the Scripto boards having a rough surface with a matt appearance.







**TAYLOR MAXWELL**

For more information, samples or to speak to one of our technical specialists, please call **0203 794 9377** or email [enquiries@taylor.maxwell.co.uk](mailto:enquiries@taylor.maxwell.co.uk)