

TAYLOR MAXWELL

CUPACLAD

cupaclad

Slate Cladding

taylormaxwell.co.uk

CUPACLAD® Slate Cladding



Natural slate cladding panels provide the perfect solution for both exterior facades and internal walls.

Manufactured by CUPA PIZARRAS, the CUPACLAD® slate cladding system combines the natural properties of the elegant material, with the ecological and sustainable benefits that slate can offer, providing a class A1 fire rated, non-combustible and BBA certified system.



Leadership Center

CUPACLAD® 101

CUPACLAD® 101 is a ventilated rainscreen cladding system for facades that utilises **invisible fixings** for a precise and uniform finish.

This exclusive fixing system allows an easy installation with stainless steel nails and overlapping slate tiles.



101 Logic

- Slates/m2 - 16.7
- Weight/m2 (slate) - <30kg/m2
- Measurements - slate size 40 x 20cm / nominal thickness 7.65mm
- Fixings - invisible exclusive screws



101 Random

- Slates/m2 - +15
- Weight/m2 (slate) - <30kg/m2
- Measurements - slate size 50 x 25/50 x 20/ 50 x 15cm / nominal thickness 7.65mm
- Fixings - invisible exclusive screws



101 Parallel

- Slates/m2 - 14.3
- Weight/m2 (slate) - <30kg/m2
- Measurements - slate size 40 x 25cm / nominal thickness 7.65mm
- Fixings - invisible exclusive screws

CUPACLAD® 201

CUPACLAD® 201 is a ventilated rainscreen cladding system for facades that utilises **visible fixings** for a reduced installation time when compared to other ventilated facades. Using large format slate tiles with stainless steel clips, the 201 system creates a clean and contemporary finish.



201 Vanguard

- Slates/m2 - 6.4
- Weight/m2 (slate) - <25kg/m2
- Measurements - slate size 60 x 30cm / nominal thickness 7.65mm
- Fixings - visible exclusive screws

Available in a range of tile sizes and finishes, the CUPACLAD® rainscreen slate facade system provides an efficient, sustainable, lightweight cladding option that utilises the natural beauty of slate.



Hotel Binet

Hotel Binet

CUPACLAD® Design

With limitless style options, CUPACLAD® design offers a vast array of possibilities for designing ventilated facades using varying sizes, forms and combinations of natural slate. Options include:

Shield: combine natural slates with other materials like wood, metal or coloured ceramic in an overlapping hexagonal design.

Ascent: a geometric design utilising rhomboid and trapezoid shaped natural slates.

Honeycomb: inspired by nature, utilising contemporary honeycomb shaped natural slate tiles.

Lineal: create distinguishing features by combining overlapping slate tiles with different colours, textures and materials.

Wave: inspired by the waves of the sea, utilising dynamic zigzag rhomboid shaped tiles.

Diagonal: a simple design with adjustable rectangular pieces to utilise the visual impact of diagonal lines.

Offset: inspired by rustic traditional stone facades, utilising two different sized asymmetric slate formats to create irregular patterns.

Waterfall: slate that is orientated vertically to create the illusion of cascading water.

— Tested



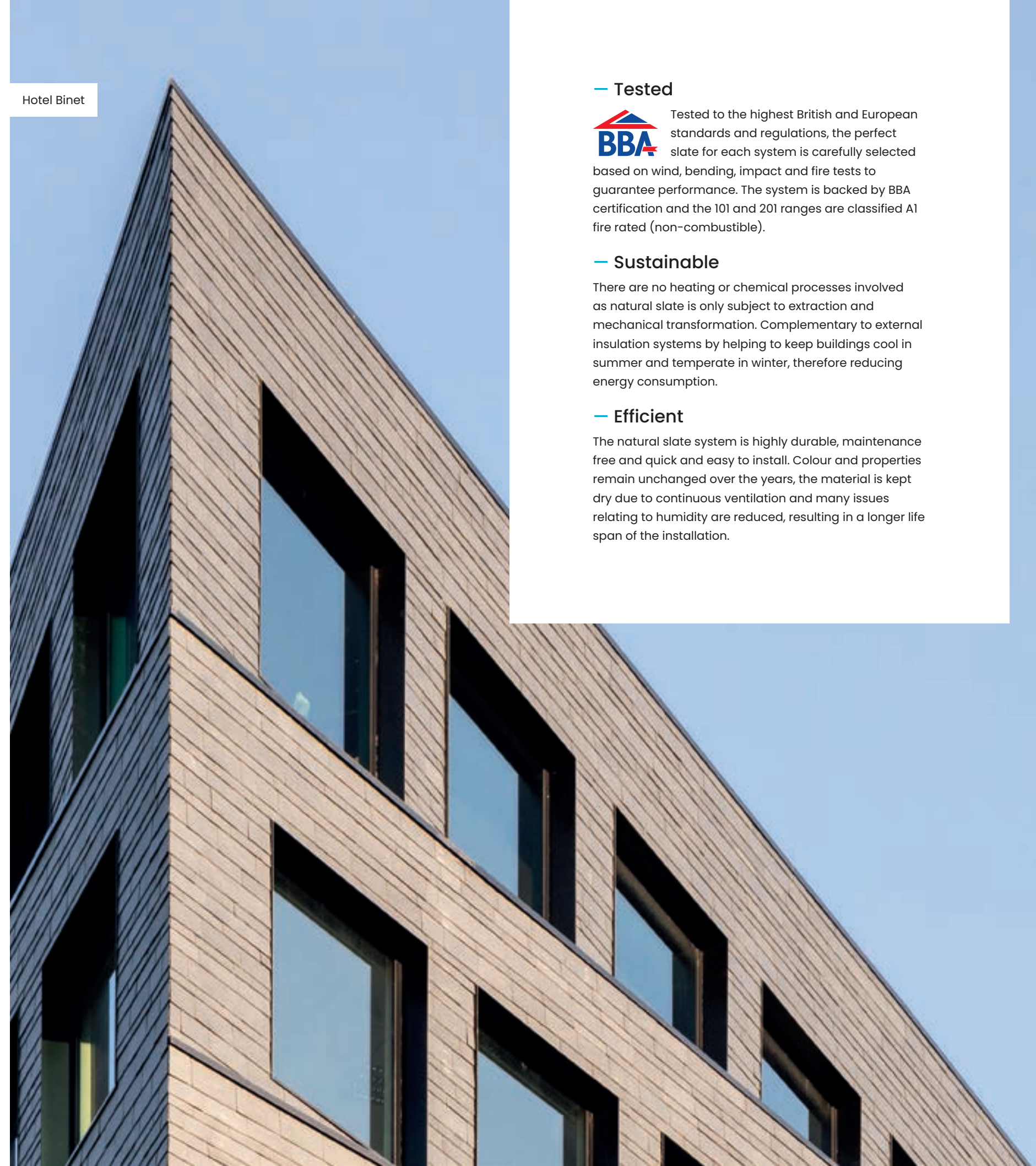
Tested to the highest British and European standards and regulations, the perfect slate for each system is carefully selected based on wind, bending, impact and fire tests to guarantee performance. The system is backed by BBA certification and the 101 and 201 ranges are classified A1 fire rated (non-combustible).

— Sustainable

There are no heating or chemical processes involved as natural slate is only subject to extraction and mechanical transformation. Complementary to external insulation systems by helping to keep buildings cool in summer and temperate in winter, therefore reducing energy consumption.

— Efficient

The natural slate system is highly durable, maintenance free and quick and easy to install. Colour and properties remain unchanged over the years, the material is kept dry due to continuous ventilation and many issues relating to humidity are reduced, resulting in a longer life span of the installation.



TAYLOR MAXWELL

CUPACLAD



For more information, samples or to speak to one of our product advisors, please call **0203 794 9377** or email enquiries@taylor.maxwell.co.uk