

Decoboard Classic

Smooth acrylic paint finish offering a classic and colourful high end façade.

Product Technical Information Sheet

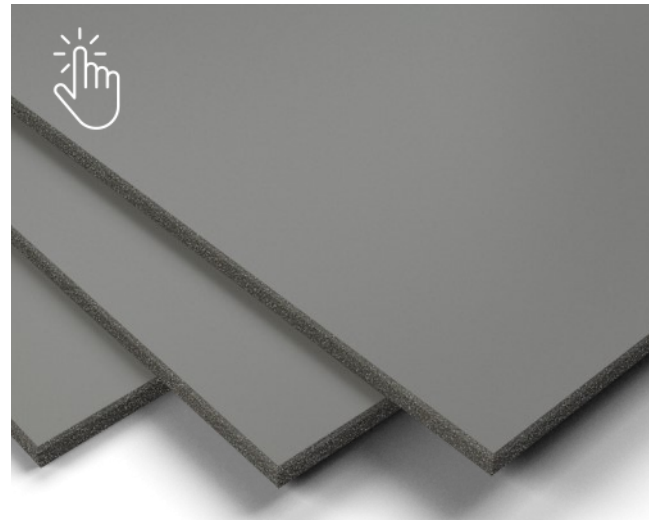
Product Type	Fibre Cement Façade Panels
Intended Use	Internal and External Walls and Soffits
Fixing Options	Rivets, screws or mechanical secret fix
Maximum Panel Size (Length x Width)	3070 x 1220mm (Squared) 3085 x 1235mm (Non-Squared)
Thickness	8mm
Nominal Weight	14.6 kg/m ²

Technical Properties to BS EN 12467

Weather Resistance	Category A
Bending Strength	Class 5 (≥ 24 MPa)
Dimensional Variation	Level I (Squared) Level II (Non-Squared)
Density (Oven Dry)	≥ 1700 kg/m ³
Modulus of Elasticity (Wet)	14,000 MPa
Water Impermeability	No Water Drops
Durability (Freeze-Thaw)	$R_L \geq 0.75$
Durability (Warm Water)	$R_L \geq 0.75$
Durability (Soak-Dry)	$R_L \geq 0.75$
Durability (Heat-Rain)	Pass
Reaction to Fire (BS EN 13501-1)	A2-s1, d0

Issue Date: 25/02/2021

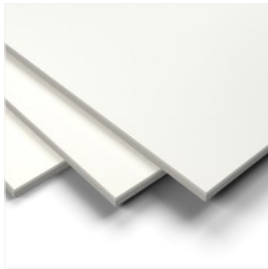
Technical data correct at time of issue. SVK panels conform to EN 12467 and are CE marked. The use of the panels for cladding is covered by European Technical Assessment 14/0284. Any questions regarding this data should be referred to the Wienerberger Technical Department. Due to the limitations of screen and print colour representation of product images it is advised that samples are viewed prior to ordering.



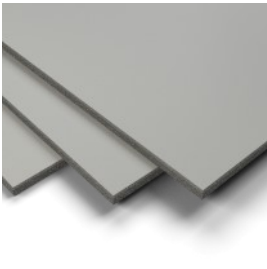
[BIM Objects Download](#)

Decoboard Classic

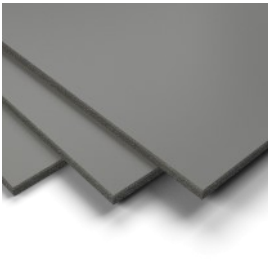
Smooth acrylic paint finish offering a classic and colourful high end façade.



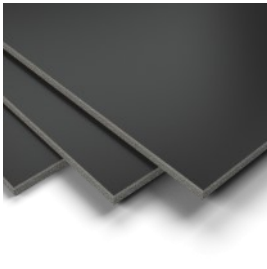
White



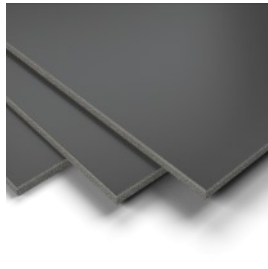
Mid Grey



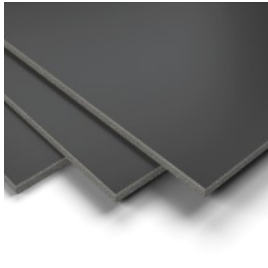
Grey



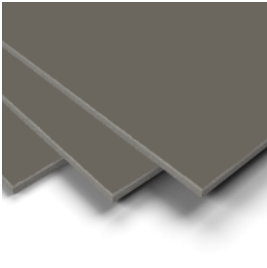
Black



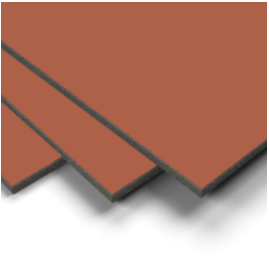
Anthracite-Grey



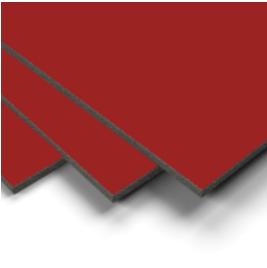
Black-Grey



Quartz-Grey



Copper-Red



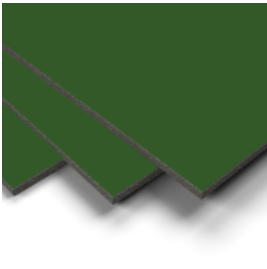
Fire



Sunrise



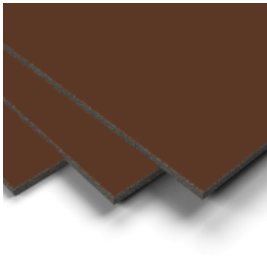
Sand



Forest



Water



Wood

Bespoke colours are available in almost any RAL or NCS colour for orders over 50m²