

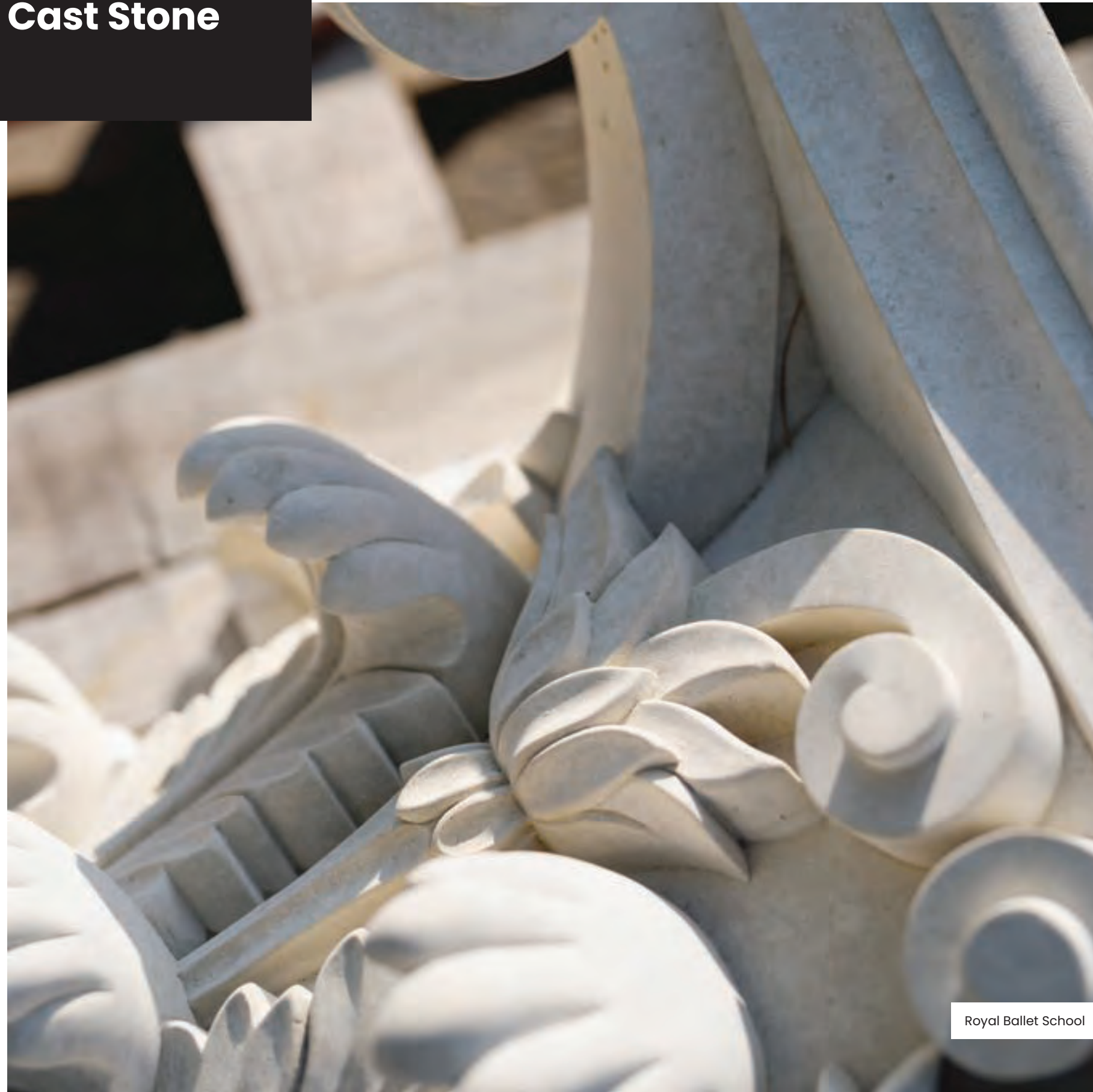
TAYLOR MAXWELL

Masonry

Reconstituted cast stone, natural stone, walling stone and architectural masonry

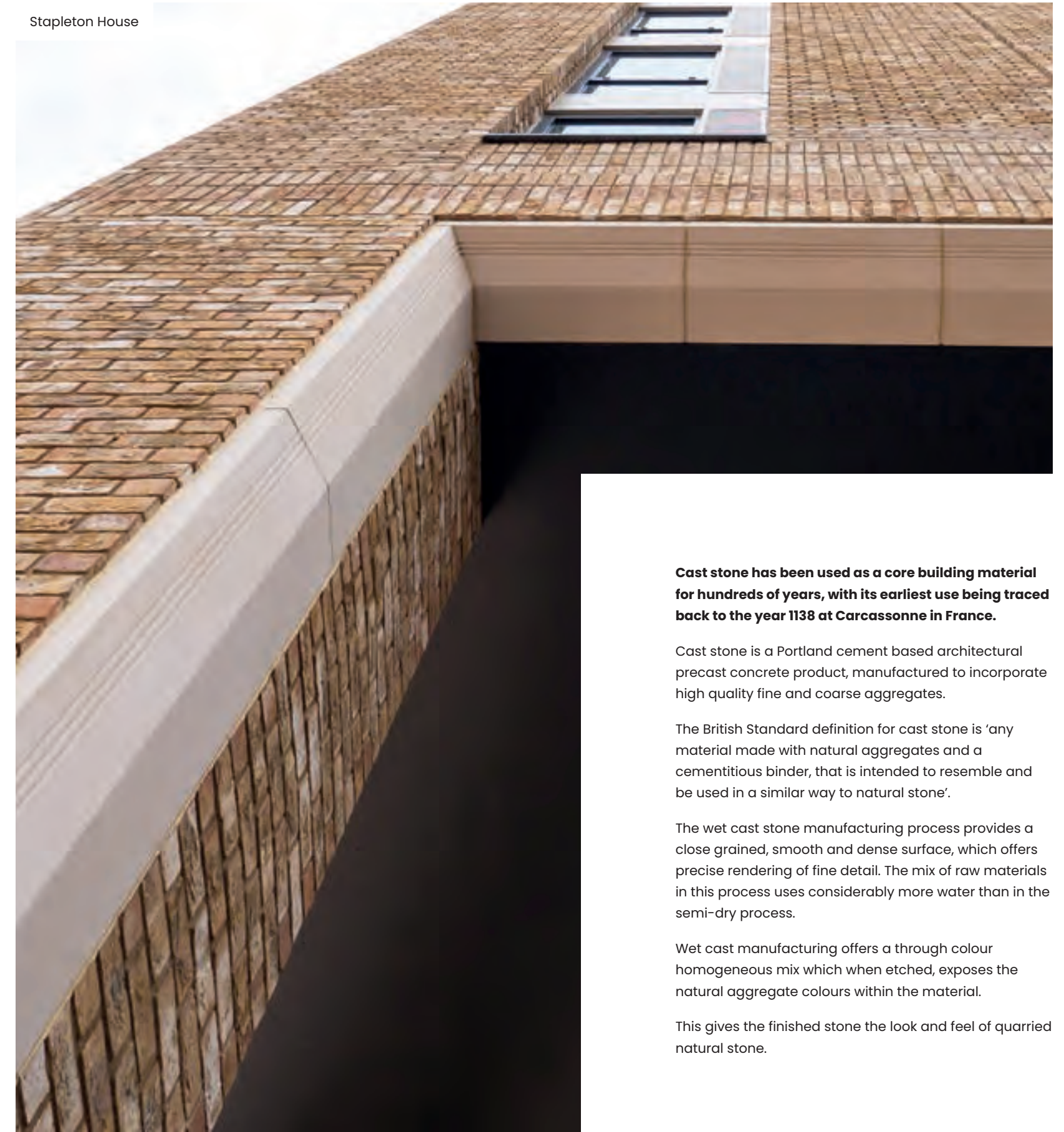
taylormaxwell.co.uk

Cast Stone



Royal Ballet School

Stapleton House



Cast stone has been used as a core building material for hundreds of years, with its earliest use being traced back to the year 1138 at Carcassonne in France.

Cast stone is a Portland cement based architectural precast concrete product, manufactured to incorporate high quality fine and coarse aggregates.

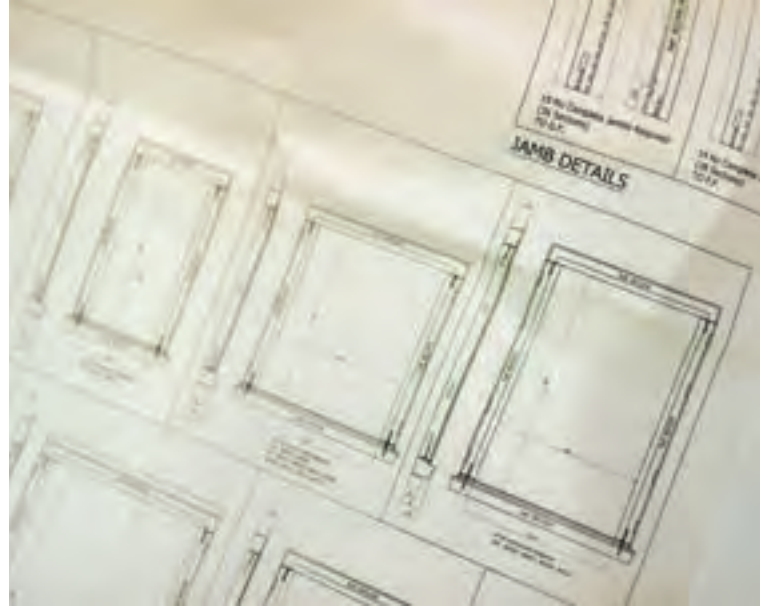
The British Standard definition for cast stone is 'any material made with natural aggregates and a cementitious binder, that is intended to resemble and be used in a similar way to natural stone'.

The wet cast stone manufacturing process provides a close grained, smooth and dense surface, which offers precise rendering of fine detail. The mix of raw materials in this process uses considerably more water than in the semi-dry process.

Wet cast manufacturing offers a through colour homogeneous mix which when etched, exposes the natural aggregate colours within the material.

This gives the finished stone the look and feel of quarried natural stone.

Step by Step Process of Manufacture



— Design

Architectural concepts and design intent are transformed into detailed stonework CAD drawings with full consultation and consideration provided.



— Moulds

Bespoke moulds are constructed, designed to maintain the required level of detail to achieve crisp, sharp arrises to every stone.



— Casting

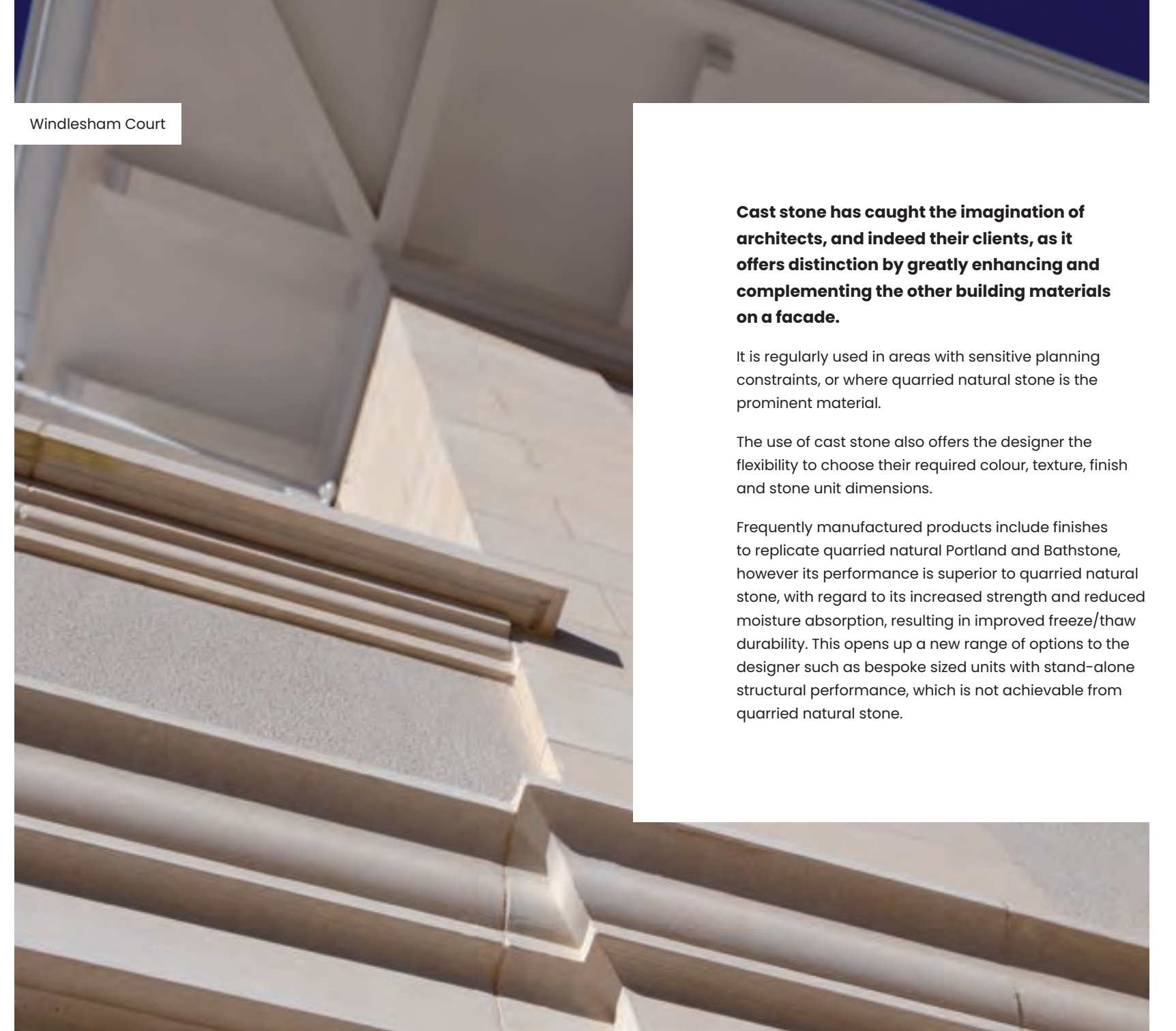
Moulds are filled and the material compacted thoroughly, with reinforcement and cast-in fixings added if specified for either handling or full structural purposes.



— Finishing

Moulds are carefully stripped from the stones, which are then dressed and finished ready for curing.

Windlesham Court



Cast stone has caught the imagination of architects, and indeed their clients, as it offers distinction by greatly enhancing and complementing the other building materials on a facade.

It is regularly used in areas with sensitive planning constraints, or where quarried natural stone is the prominent material.

The use of cast stone also offers the designer the flexibility to choose their required colour, texture, finish and stone unit dimensions.

Frequently manufactured products include finishes to replicate quarried natural Portland and Bathstone, however its performance is superior to quarried natural stone, with regard to its increased strength and reduced moisture absorption, resulting in improved freeze/thaw durability. This opens up a new range of options to the designer such as bespoke sized units with stand-alone structural performance, which is not achievable from quarried natural stone.

— No Pigmentation

Our wet cast standard Portland and Bathstone finishes contain no pigmentation, and are solely the natural colours of the aggregates within them.

— Superior Performance

Reconstituted cast stone's performance is superior to quarried natural stone with regard to its increased strength and reduced moisture absorption, resulting in improved freeze/thaw durability.

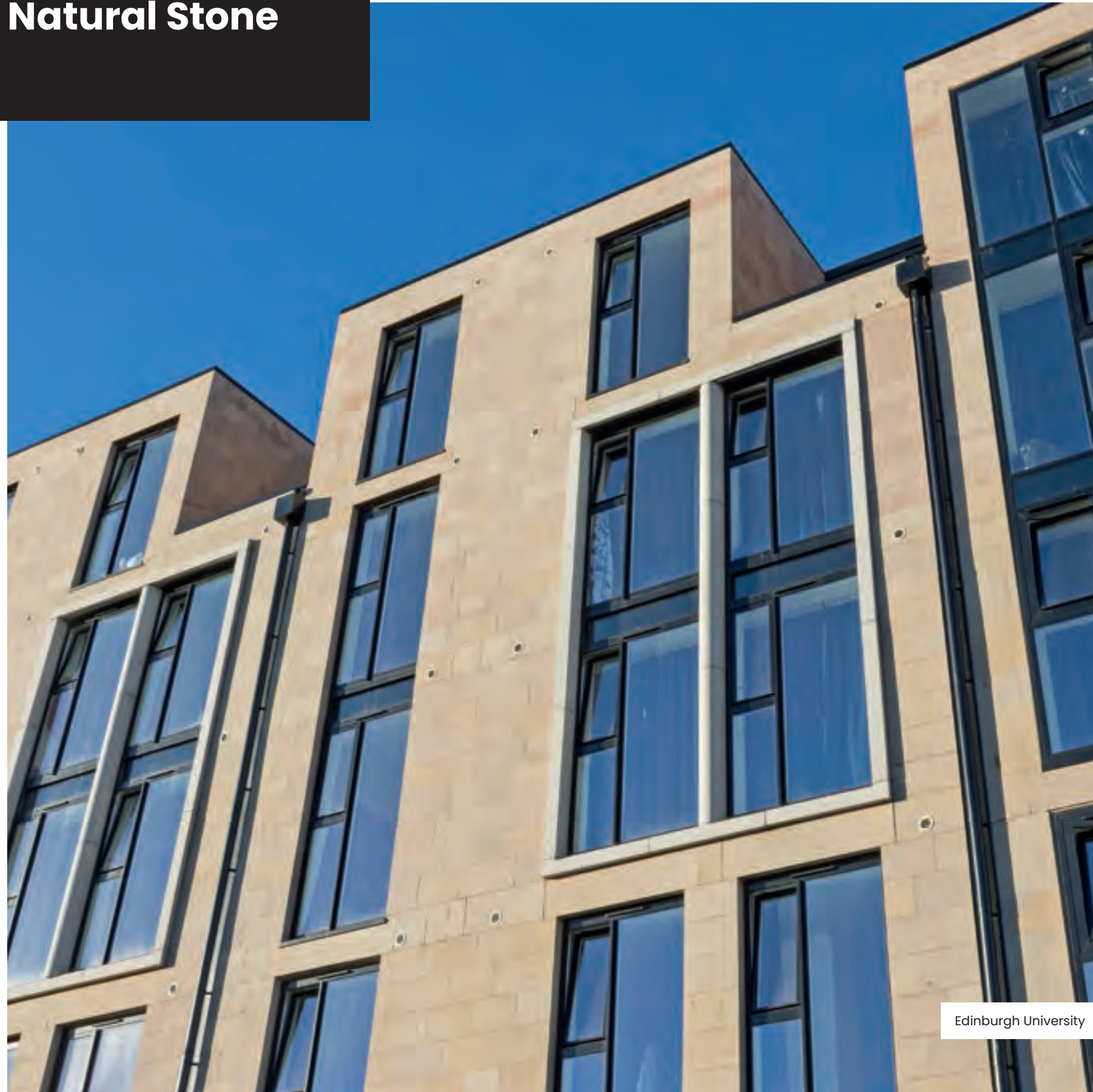
— Highest Quality

Due to the use of the highest quality handmade moulds, the finished product presents the designed level of precise, sharp detail.

— Additional Options

A new range of options is available to the designer such as bespoke sized units with stand-alone structural performance, which is not achievable from quarried natural stone.

Natural Stone



Edinburgh University

Taylor Maxwell are a leading supplier of natural stone for the facade and landscaping industries. With a comprehensive range covering all stone types, our portfolio has something to suit all visual requirements.

Many of the quarries we partner with have been actively working since the 1800's, and offer stone rich in colour, character and heritage with adequate reserves. Using locally sourced stone on your planned development from these well-established quarries located across the UK, not only provides a sense of character in keeping with the local vernacular, but also provides a sustainable approach to the construction of your scheme.

Our stone range includes Basalt, Granite, Limestone, Marble, Pennant, Quartzite, Sandstone, Slates, Travertine and Yorkstone.

Energy is only used for the extraction of the natural stone from an open surface quarry and then processing it further. This energy usage is relatively low when compared with other building materials often produced in a factory environment, making it a more environmentally friendly option.

Recent research suggests that the total calculated cost of a natural stone building over a 30-year period is considerably less than many other buildings when comparing the short-term material costs, bench-marked against the higher maintenance costs often associated with more modern types of facades.

Smooth, tooled, split face, pitched face, rumbled, picked, broached and many more finishes are available, ensuring the closest match to the client's brief can be found.

Consistency of stone supply is also offered for large schemes or multi-phased developments.



Sussex Court

Kinnear Road

Walling Stone

Reconstituted walling stone is a popular choice with local developers and builders, and is widely accepted by planners as a durable, attractive and cost-effective alternative to natural stone.

Reconstituted walling uses real stone aggregates sourced from the same quarries as those used for natural stone walling. This gives the product the ability to replicate natural stone visually and characteristically.

Suitable for load-bearing and non-load-bearing use, the hydraulic press manufacturing process results in low water absorption, meaning the product is extremely durable and will stand the test of time.

Almost all stone types are available to match the contextual style of the locality including buff sandstones, red sandstones, cream to gold limestones and ironstone, with a range of sizes and finishes to suit the design brief. The moulds, which are taken from natural stone, recreate the unique and subtle textures and characteristics of the raw material. The wide range of authentic shades match most original natural stones whilst the manufacturing process allows for a dimensional accuracy that facilitates impressive build speeds.



Daniel Hill



If natural stone is the preferred option for your project, we have close working relationships with all major UK quarries and are able to source any type of natural stone walling or masonry required for your development.

We work closely with developers, contractors, architects and local authorities to source the appropriate material for your residential or commercial building project. We are able to offer guidance when it comes to matching existing buildings and identifying the origin of materials already built within any given area.

As this is a natural product formed over thousands of years, then quarried from within the UK, natural stone walling offers an incredibly durable walling or masonry product and makes an excellent option for a robust and aesthetically pleasing facade.

We are committed to providing high-quality stone products, manufactured to your specification and delivered to site to meet your build programme. We will provide full take-off services based on your drawings, samples for planning and client sign-off, and cost-effective quotes to meet your budgetary requirements. meet your budgetary requirements.

Sussex Court

Architectural Masonry



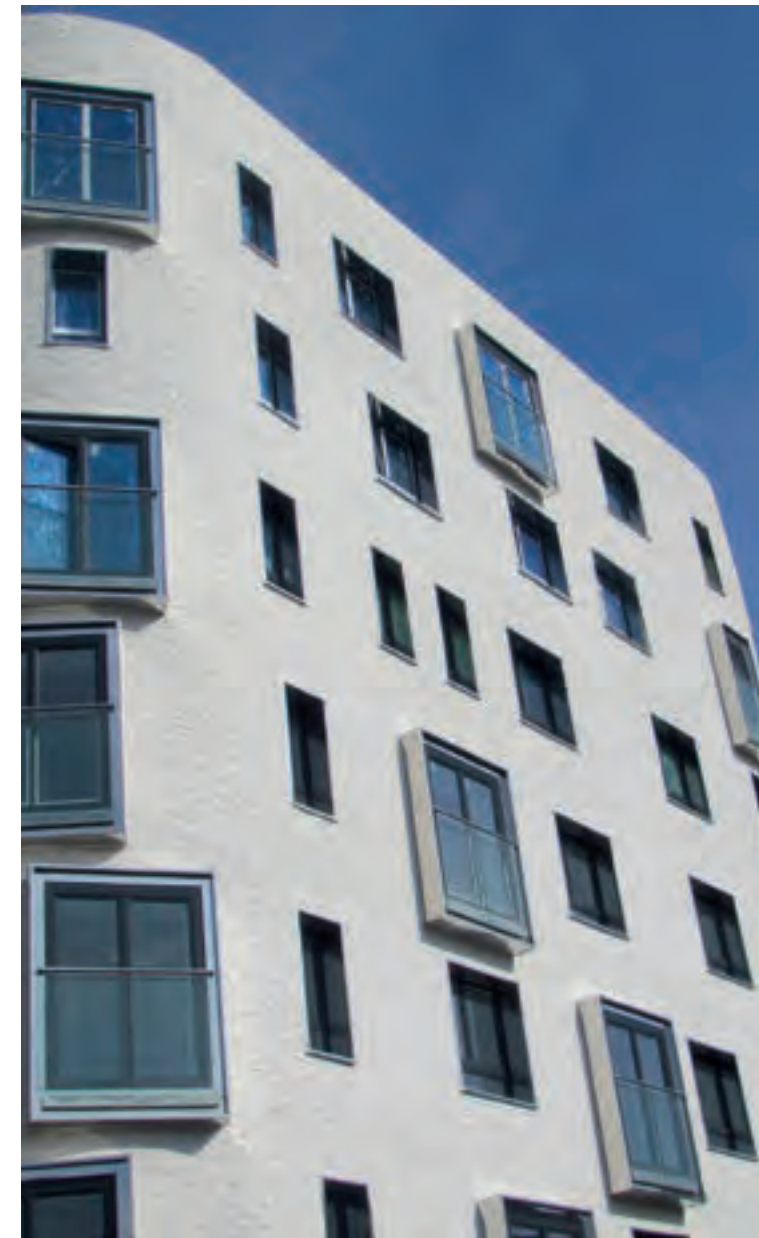
Mary Seacole House

Architectural masonry provides a decorative facing concrete block with design quality and dimensional accuracy. It is a structural material which can be used as part of the internal or external leaf, providing a clean, maintenance-free solution.

Manufactured from a mix of top quality limestone aggregates and cements, architectural precast concrete masonry is a modern, cost-effective building material, that is extremely durable.

This material is available in a wide variety of colours and finishes including polished, glazed, fair faced, split and textured, which is often used in healthcare, education, commercial and residential developments.

A range of standard units are available, however bespoke elements can be created with each hand moulded by experienced craftsmen to match your designs.



Types of Finish

— Fair Face

These precise and smooth blocks are used to create large natural smooth surfaces and are offered at competitive price points compared to other materials, for example render. These smooth blocks, can also be mixed with other more textured blocks, to produce a striking contrast on a building's facade.

— Shot Blasted

This production process exposes the inner aggregate of the material, which creates a matt texture with a flat surface. The degree of erosion can be developed to accommodate the required aesthetic.

— Split Face

The split face stone finish is desirable as it provides natural texture and stratification that is hard to duplicate in a man-made product. These cast stone blocks are individually split down the middle to produce a face that replicates hand hewn stone, with each piece offering a unique finish.

— Burnished

The burnished face finish reveals the beauty of the natural aggregates and is a popular choice for projects where an understated aesthetic and reduced glare are desired.

— Polished

Selected natural aggregates are mixed and polished to create a wide range of colours and variations, replicating the rich textures associated with marble and granite finishes.



Sussex Court

Natural stone & walling stone



Sussex Court is an exclusive collection of luxurious homes, set within the conservation area of the Duchy of Lancaster Estate in North Yorkshire. With prices starting at circa £1m, each of the new houses have been designed with impressive facades and elegant exteriors and boast high specification interior design, exclusive features and spacious gardens.

Set just outside the beautiful town of Harrogate, recently voted the third happiest place to live in the UK, the Duchy Estate masterplan was designed by architects Wildblood Macdonald in conjunction with Amec Foster Wheeler. The scheme of 160 houses at Sussex Court was developed to provide an outstanding design standard, that compliments the nearby town, and offers a varied range of housing types amidst a generously landscaped rural setting.

Working closely with main contractors Linden Homes, part of the Galliford Try Group, Taylor Maxwell were pleased to assist with the specification and supply of a range of locally sourced natural stone products to this development. A selection of the high-quality homes have been built using natural stone walling for their exterior facades, and the majority of boundary walls and copings have been built using drystone walling sourced within 10miles of the scheme, adding to the local heritage of the development.

Natural stone lends itself perfectly to providing a unique and individual characteristic to a property, offering a hand-crafted touch and an overall feeling of high quality craftsmanship. Its durability as a construction product offers a high quality, long-term and low maintenance option that, rather than fading or showing aggregate with age, actually improves over time. The textural quality of the locally sourced stone permits the seamless integration of the new development within its rural environment.

The design of Sussex Court has successfully merged the characteristics of the local architecture, integrating the long-standing heritage and notable historic style, whilst providing easy access to the charming facilities that Harrogate has to offer. The development was formed to respect the wider landscape setting and intentionally looks to create a long term green edge to the historic spa town.



West Hendon

Cast stone

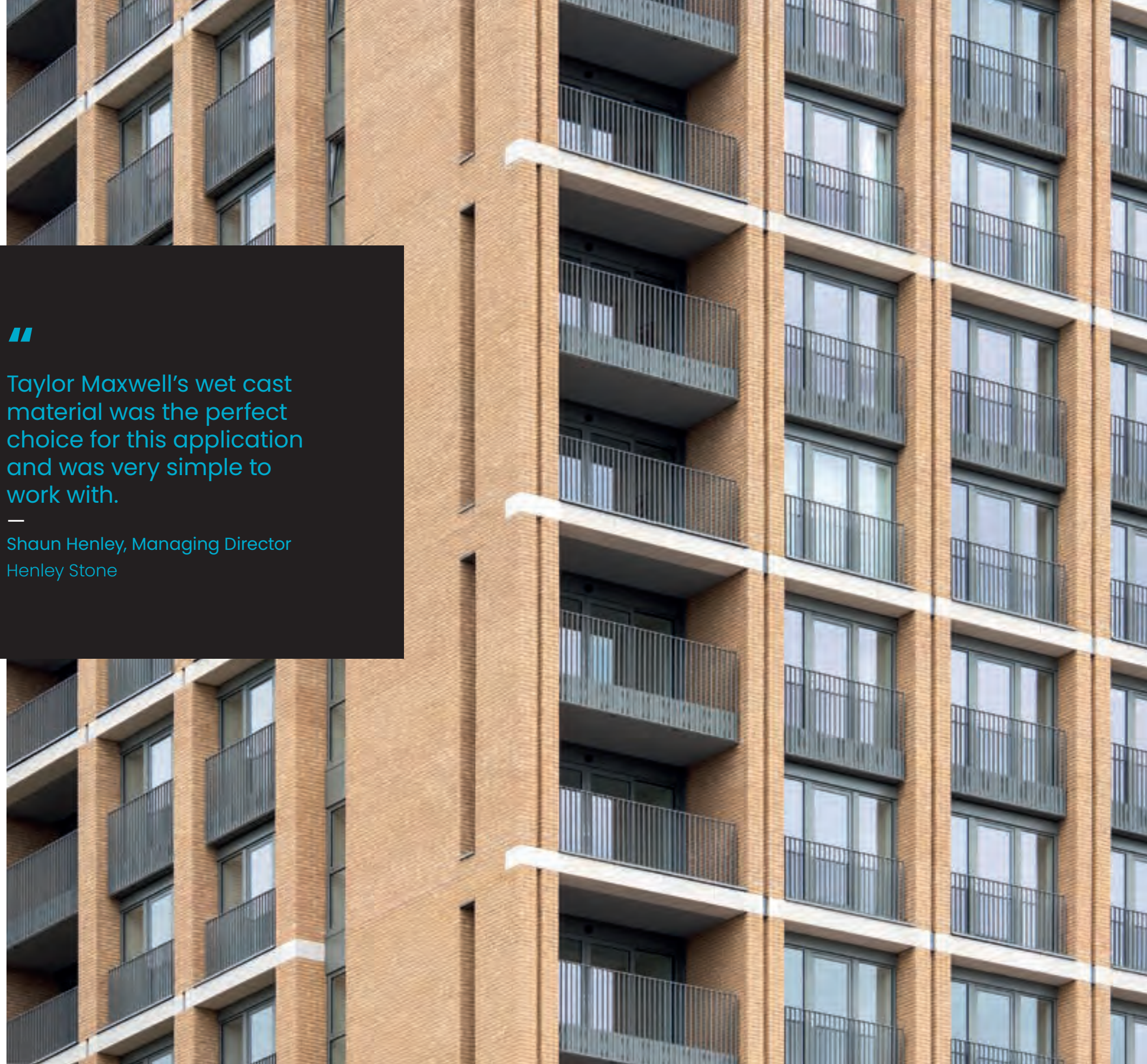
See more projects at taylor-maxwell.co.uk/projects



CAST STONE BANDING



Hendon Waterside is a flagship Barratt London residential regeneration scheme in North London. The project itself is creating 2,000 new homes set in 170 hectares of beautiful grounds and gardens, which will provide residents with lakeside living within 30 minutes of Central London. The standout building on the site is the Vista building, rising some 26 storeys, with views across the Welsh Harp reservoir and the city beyond.



Taylor Maxwell's wet cast material was the perfect choice for this application and was very simple to work with.

— Shaun Henley, Managing Director
Henley Stone



Shaun Henley, Managing Director of Henley Stone, the installer on the project advised, "Many of the buildings have Portland wet cast stonework balconies and banding at floor levels around their perimeter. As stonework installers, we were pleased that Vobster Cast Stone (part of the Taylor Maxwell Group) was selected as the stonework manufacturer by both Barratt London and the architect Allies and Morrison."

"Having worked with Vobster for many years now, we knew we would be installing what we consider to be the very best wet cast material available on the market. This proved to be the case yet again, as our masons would frequently praise the accuracy and quality of the Vobster product."

Shaun continued "There were some very complex design issues which Vobster resolved with Barratt London in good time for us to install the stonework without interruption or delay. Their wet cast material was the perfect choice for this application and was very simple to work with. It provides a fantastic finish and contrasts extremely well with the adjacent bricks, metalwork and glass."

"Due to significant design restraints, we needed the supplier to be able to manufacture the material to very tight tolerance levels, and to be able to keep up with the high pressure demands of supplying to such an important flagship project. We are looking forward to working with them again on the next project and will continue to recommend them for projects to clients and architects without hesitation."



Watling Grange

Reconstituted Walling Stone



Watling Grange, situated on the outskirts of Harrogate in North Yorkshire, is a development of 345 luxury homes designed to promote healthy living within nature. With houses and flats ranging from two to five bedrooms, the development was carefully and thoughtfully designed by JTP Architects, for client Persona Homes, part of Home Group Ltd. Located just two miles from Harrogate train station, the homes are in an ideal location for commuters. By train, Leeds can be reached in 31 minutes, York in 37 minutes and Bradford in just over an hour.

Managed by main contractors **United Living**, Watling Grange is set within an 18.6-hectare countryside plot and surrounds a central parkland called The Meadows. Views over the country landscape and the town of Harrogate are enabled due to the slightly sloping topography of the site, which also allows for sustainable drainage features.

The £110m development has been completed using facing bricks and reconstituted walling stone, supplied by Taylor Maxwell and expertly installed by **United Living**. **JTP architects** were passionate about retaining and enhancing the existing landscape surrounding the Watling Grange development, as well as taking inspiration from local farm buildings and houses in the nearby Victorian spa town of Harrogate. Working alongside **United Living**, Taylor Maxwell studied bricks used in the area and put forward a selection of materials that matched those used locally. Once this study had been completed, three high-quality bricks were chosen that corresponded with the desired colour palette.

Reconstituted walling stone was also used for the development to compliment the brickwork facade, whilst creating a sturdy and traditional structure. A cost-effective alternative to natural walling stone, reconstituted walling stone is a favoured choice with developers and builders wanting a durable and attractive material. It can also replicate the contextual style of the local vernacular and be manufactured in a range of sizes and finishes to suit the design brief. With inspiration taken from the nearby town of Harrogate, a reconstituted walling stone with a split face texture was developed to match and blend in with the natural stone found in Northern Britain. Once the materials and colour palette had been chosen, a mock-up panel was manufactured, allowing the project design team to envisage what the facade of the houses would look like when finished.

With healthy living being a prominent design requirement, Watling Grange was carefully constructed to be pedestrian and cyclist friendly, with an extensive network of footpaths and cycle paths weaving through the development. These paths take residents through the thoughtfully planned outdoor spaces that have been designed to bring the outdoors into homes. The development is encapsulated by retained mature trees, woodland areas and ponds, giving Watling Grange a calming and natural environment. By working closely with local interest groups, the architects were able to further establish a countryside feel by introducing green corridors, wetland habitats and a nature reserve to the former agricultural land.

Although the homes have been developed to reflect the historical architecture of the area, they all have a contemporary design and each house has a layout that compliments the requirements of a modern family. All the homes have a sense of space, with large windows positioned to maximise the amount of sunlight coming in, whilst also giving the illusion of the outside coming in. A central meadow allows residents to benefit from the countryside and green spaces on their doorstep.

This development utilises reconstituted walling stone, three contrasting-coloured bricks and projecting header details in the brickwork. The projecting header details help to add a sense of rhythm and depth to the facade. Together these materials create a thoughtful and aesthetically pleasing environment for residents to admire and enjoy.



Blenheim Terrace

Wet Cast Stone



Designed by architects **Modulor Studio** and completed by Main Contractor **Golden Houses Development**, Blenheim Terrace is a development of three luxury townhouses, located in the St John's Wood Conservation Area near the Abbey Road studios.

The luxury townhouses consist of 4 bedrooms across 5 storeys, on a development of over 4,000 sq ft. Due to demand for more residential accommodation, the Blenheim Terrace development was created for Executives from American banks to relocate to London. The houses boast generous family living spaces, master suite bedrooms and family and guest bedrooms with light, contemporary interiors.

Modulor Studio aimed to create a new development that would complement the local architectural context, whilst enhancing the existing streetscape. It was important that the selected materials create a sense of timeless elegance, that incorporated traditional characteristics into modern architectural style.

As the new townhouses were to be built next to existing residential buildings, the architects wanted to complement the surroundings and create a sense of cohesion between the housing developments of the street-scene.

It was for these reasons that a light and warm palette of materials from Taylor Maxwell and Vobster Architectural were selected. support the weight of the masonry above or cope with the desired spans that the architect was trying to achieve. Wet cast stone provided the perfect solution

The external material palette consisted of a light buff brick along with reconstituted Portland cast stone. This simulated handmade buff brick and wet cast Portland stone, along with carefully considered detailing, has achieved the architect's vision to blend with surrounding buildings and add a contemporary, timeless finish to the new facade.

A number of wet cast stone dressings and bespoke structural window heads were supplied to create intricate design details. Wet cast stone is ideal for creating structural units with high compressive and tensile strengths due to the inclusion of bespoke high specification cast-in reinforcing. This means that these intricate designs can be achieved on any scale, even with units weighing up to 10 tonnes.

To complete the facade, Portland stone cills, capping, coping, door surrounds, panels and parapet units were utilised to blend harmoniously with the neighbouring buildings. **Modulor Studio** said upon completion that the combination of light brick and warm coloured stone has created a sophisticated exterior that corresponds with the surroundings.



Ashraya

Wet Cast Stone



Ashraya is an innovative and highly sustainable house tucked away in the hills of rural Hertfordshire. Set in the countryside and surrounded by nature, this family home was designed by architects Kirkland Fraser Moor and managed by Husker Limited. Located in The Chilterns Area of Outstanding Natural Beauty (AONB), the house was considerably constructed to be aesthetically pleasing, whilst being minimally visible from the road and neighbouring properties. The home is nestled low into the ground and is sheltered by a grass covered arch, allowing the building to blend seamlessly and respectfully into its surroundings.

The 510m² residence is low carbon with a fully glazed facade. Doors open out onto courtyards on both sides, which are encompassed by the historic flint wall of the walled garden that sits adjacent to the new property. The discreet exterior conceals a home which spans across three levels and has been built according to Paragraph 80 of the National Planning Policy Framework which allows 'construction of stand-alone rural houses if the design is of exceptional quality'.

Taylor Maxwell worked with cast stone manufacturer Vobster Architectural to design and supply wet cast stone to the development. The wet cast stone was expertly installed by trusted partner **Henley Stone**. Vobster Architectural first became involved in the project in 2017, when they were approached by architects Kirkland Fraser Moor with their concept drawings and initial ideas. After subsequent meetings, wet cast Portland stone was selected as it gave the same desired appearance as natural stone, but with many added benefits, such as being able to produce much larger pieces and to cast-in reinforcement and fixing brackets. Natural stone was not suitable as it would have been unable to support the weight of the masonry above or cope with the desired spans that the architect was trying to achieve. Wet cast stone provided the perfect solution as it is a highly durable and strong product. When tested to the relevant British Standard, Vobster Architectural's wet cast stone exceeds several requirements. In particular, compressive strength results can be up to 200% higher than the requirement, with measurements in excess of 50 MPa. Due to the strength of the product, no additional support was required which brought significant construction and economic benefits.



During the design stage, using the landscape became an important and integral part of the building's concept. The curve of the building allows the surrounding landscape to run up and over the roof, meaning the home effortlessly blends into the countryside. It also continues the tradition of 'form follows the environment', without imitating styles of the past, making it truly unique.

The use of cast stone allowed for a quick installation time on site due to all of the pieces being precast at the Vobster Architectural factory. This also meant that there was very little wastage of the product during onsite construction as all of the units were made to exacting dimensions and requirements. The house boasts further eco credentials, with a ground source heat pump which uses predicted weather, external temperature and humidity to determine how much or little to warm the space.

After five years in the making, Ashraya was completed in 2021 and is now an expansive and contemporary home. The sunken ground level is open-plan and contains the homes living areas under an exposed timber roof. Downstairs, a basement level features a studio, snooker room and den, which can be playfully reached by a slide. The true meaning of Ashraya is 'shelter of peace', something that the homeowner believes their new home has become.





TAYLOR MAXWELL

For more information, samples or to speak to one of our product advisors, please call **0203 794 9377** or email enquiries@taylor.maxwell.co.uk

The latest version of this brochure in digital format is available on our website. Details provided are subject to changes. If you require further information, please contact us. Last updated August 2021.