

Smart solutions for
Residential buildings

fermacell®

 JamesHardie®



Beautiful

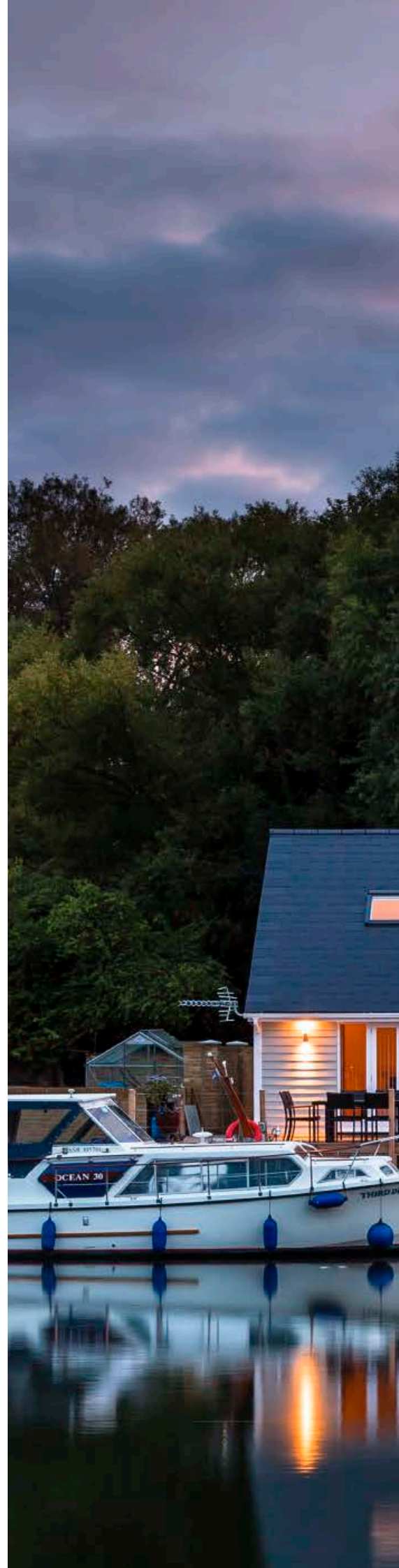


Durable



Contents

- 4 A smarter way
- 8 Our product range
- 10 HardiePlank® family
- 16 HardiePanel® cladding
- 22 fermacell® fibre gypsum
- 26 fermacell® spandrel panels
- 32 HardieWindbreaker® sheathing
- 36 HardieBacker® tile backerboard
- 42 Get in touch





A smarter way

James Hardie is a world-leading manufacturer of smart, sustainable building materials. Established over 130 years ago, we pioneered the development of both fibre cement and fibre gypsum technology.

We set the standard in premium, high-performance interior and exterior building products. Our portfolio includes the James Hardie®, fermacell® and Aestuver® brands.

Inspired by new technology and driven by our passion for design, we are constantly growing our extensive range of building solutions.





Designing exceptional residential buildings

We are specialists in supporting clients, architects and installers working in the residential sector to deliver schemes of outstanding value and design.

Our portfolio includes through the wall solutions to solve design and technical challenges. Our materials offer benefits around space saving, enhanced strength, fire protection, acoustic performance, impact, moisture, weather resistance and much more.

We work in partnership with our clients to provide more than just building materials; with complimentary take off services, technical on-site training and ongoing client relationship management to ensure the best possible quality delivery for your development.





5

Our product range

Complete through the wall solutions

1

HardiePlank® family

HardiePlank® product family consists of two profiles – HardiePlank® lap weatherboard and HardiePlank VL® inter-lock. Both cladding solutions offer the ultimate design flexibility, with both horizontal and vertical installation for a timeless facade.

2

HardiePanel® cladding

HardiePanel® cladding is a large element cladding sheet that brings real flexibility and freshness to your facade designs – at an attractive price. Its crisp, clean lines make it a smart choice for strong, contemporary designs.

3

fermacell® fibre gypsum for floors

fermacell® flooring is a dry screed solution that optimises thermal conductivity and is quick to install. Available with an optional wood fibre layer for advanced acoustic performance.

4

fermacell® spandrel panels

fermacell® spandrel boards offer a pre-assembled structural panel solution, to be used as a separating wall to help stop the spread of fire in new build housing.

5

HardieWindbreaker® sheathing board

HardieWindbreaker® sheathing board is an engineered fibre cement weather defence barrier. The boards will not warp or shrink when exposed to adverse climates, and offer a guaranteed 12 months' exposure during construction.

6

HardieBacker® tile backerboard

Protect your tiles with HardieBacker® tile backerboard, the UK's number 1 engineered tile backerboard for walls and floors. With its unique cement formulation, HardieBacker® tile backerboard has no loose aggregates or fillers, making it the strongest, most uniform composition.

6

HardieBacker® tile backerboard
Use internally on walls and floors to protect against moisture damage.



Fire
Resistant



Moisture
Resistant



Made
to Last

All our fibre cement and fibre gypsum building products offer engineered, high performance, smart building solutions that are made to last.



4

fermacell® spandrel panels
Use internally to resist sound and fire transmission between residential buildings.

1

HardiePlank® family
Use externally as cladding for a ventilated rainscreen facade solution.

5

HardieWindbreaker® sheathing board
Use externally as a sheathing layer behind ventilated rainscreen cladding.

3

fermacell® flooring
Use internally on floors as a dry screed solution.

2

HardiePanel® cladding
Use externally as cladding for a ventilated rainscreen facade solution.

HardiePlank® family

Beautiful + Durable

With our HardiePlank® product family of fibre cement products you can choose the cladding that is engineered to withstand whatever nature brings, with the stylish beauty that not only looks good but lasts.



HardiePlank®





HardiePlank® VL

Most natural look

according to 90% of homeowners¹

Low maintenance

thanks to unique ColourPlus™ Technology²

Up to 20%

faster installation³

¹ Based on feedback of more than 800 respondents

² ColourPlus™ finishes have been evaluated in tests simulating decades of UV exposure and show exceptional resistance to colour change

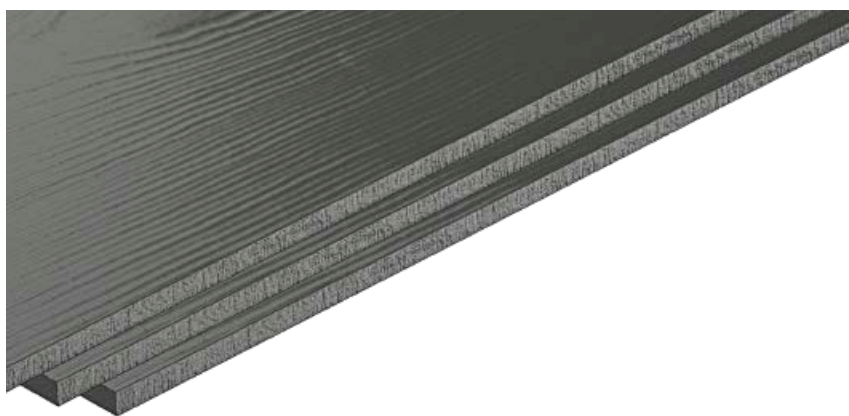
³ Based on side to side installation with comparable systems

HardiePlank® weatherboard

Exceptional looks that last

If you're looking for a versatile, low maintenance weatherboard with a natural and beautiful texture, look no further than **HardiePlank®** fibre cement cladding. It's the facade of choice for builders and homeowners alike, protecting and beautifying millions of homes.

Made using our seventh generation fibre cement formulation, **HardiePlank®** cladding offers the ultimate in fire, moisture, rot and pest resistance. The unique properties of our boards offer major advantage over conventional cladding materials, providing ease of installation, design flexibility and enhanced durability.



Non combustible

HardiePlank® cladding stands strong even in the most extreme adverse events. Our weatherboards are non-combustible, achieving the highest rating possible (A2, s1-d0) for a coloured facade product.

Our boards have been extensively fire tested under the 13501-1 suite of fire tests for CE compliance, and would not contribute to the propagation of fire.

Low maintenance

Choosing fibre cement ensures your project will stand strong for years to come. Pre-primed and factory painted, HardiePlank® cladding utilises ColourPlus™ Technology, a multi-coat, baked-on finish offering a low maintenance solution that is fade resistant.

HardiePlank® cladding is exceptionally durable, and is BBA certified to last in excess of 30 years.



Right Mulberry Place, New Romley. HardiePlank® cladding was used as a full wrap facade solution throughout the scheme.

Below Waters Lane, Cambridge. HardiePlank® cladding in Boothbay Blue was used as a half wrap to complement yellow brick.



HardiePlank® weatherboard

Typical specification

HardiePlank® cladding offers the ultimate design flexibility, and is available in 21 colours and two textures. It can be installed horizontally, vertically or diagonally as well as offering finishing in traditional shiplap, open joint or 'hit and miss' styles.



Right Burnham Grange, Colchester. Pearl grey cladding was used as a half wrap solution, used in conjunction with local red brick.



HardiePlank® cladding



System specification:
HardiePlank® Horizontal General Arrangement.

HardiePlank® cladding







“We felt using HardiePlank® cladding really accentuates the design and gives the properties a modern twist, completely transforming the external face of the facades.”

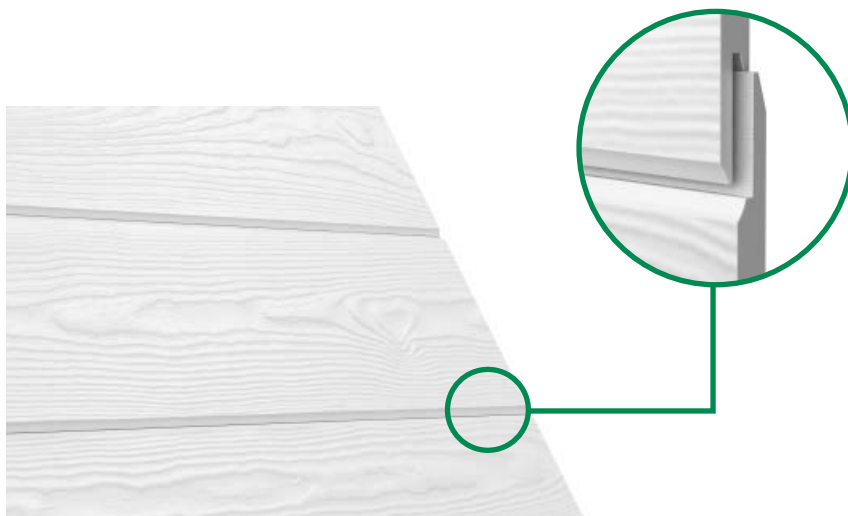
Lucy Kapinski, Vision Developments

HardiePlank® VL weatherboard

Beautiful + Durable

Engineered to deliver unparalleled performance and easy fitting, **HardiePlank® VL** boards offer the perfect alternative to traditional shiplap cladding, while maintaining all the benefits of the classic HardiePlank® fibre cement weatherboard.

Its seamless, easy-to-fit interlock requires no support system during installation, saving valuable build time and costs. Plus with in-built climate protection and a 15 year warranty as standard, you can rest assured your property will stand the test of time.



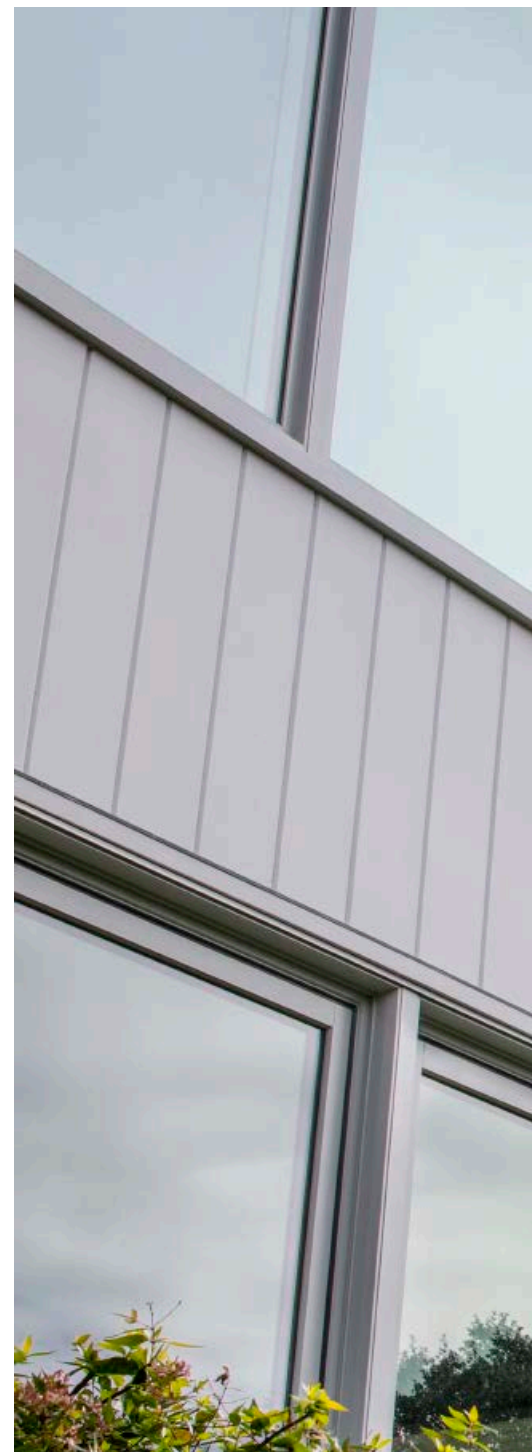
Non combustible

HardiePlank® VL cladding stands strong even in the most extreme adverse events. Our weatherboards are non-combustible, achieving the highest rating possible (A2, s1-d0) for a coloured facade product.

Our boards have been extensively fire tested under the 13501-1 suite of fire tests for CE compliance, and would not contribute to the propagation of fire.

Low maintenance

Choosing fibre cement ensures your project will stand strong for years to come. Pre-primed and factory painted, HardiePlank® VL cladding utilises ColourPlus™ Technology, a multi-coat, baked-on finish offering a low maintenance solution that is fade resistant.



Right This home features the distinct lines of HardiePlank® VL weatherboard. The homeowner chose contrasting colours and installation styles to create a dramatic visual effect and curb appeal.

Below HardiePlank® VL boards in Arctic White were installed vertically to accentuate the height of the building.



HardiePlank® VL cladding

Typical specification

HardiePlank® VL board is perfect for both horizontal and vertical installation. Available in two textures and six colours plus pre-primed, ready to paint in all RAL colours.



Right New build extension in Harrogate, accented with HardiePlank® VL weatherboard in Anthracite Grey for a modern aesthetic that enhances its original design.



HardiePlank® cladding



System specification:

HardiePlank® VL Vertical General Arrangement.

HardiePlank® cladding



"Mixing traditional with modern was key to our design and so we quickly switched to HardiePlank® VL for the crisp, clean lines to contrast with the exposed stone."

Private Homeowner





HardiePanel® cladding

Flexibility for your facades

HardiePanel® cladding is a large element cladding sheet that brings real flexibility and freshness to your facade designs – at an attractive price. Its crisp, clean lines make it a smart choice for strong, contemporary designs.

Available in a choice of two textures – smooth or cedar wood effect finish – and 21 colours (with custom colour options).



Made to last

With advanced seventh generation technology, we've created the most durable cladding ever made, with enhanced properties for unmatched durability. Our additives are chemically bonded to provide lasting resistance to rain, hail, wind, rot and pests.

Non-combustible cladding

James Hardie® cladding stands strong even in the most extreme adverse events. Our weatherboards are non-combustible, achieving the highest rating possible (A2, s1-d0) for a coloured facade product. Our facades have been extensively fire tested under the 13501-1 suite of fire tests for CE compliance, and would not contribute to the propagation of fire.



Right HardiePanel® cladding was used to complement a mix of wood and aluminium cladding for this unique self build project.

Bottom HardiePanel® cladding was used in combination with HardiePlank® cladding to complete this residential refurbishment project.



HardiePanel® cladding

Typical specification for facades

HardiePanel® weatherboard offers the best of both strength and usability. We've found the perfect balance between high-quality Portland cement, sand and cellulose fibre to deliver lightweight, easy-to-cut cladding that installs firm and fast.



Right HardiePlank® weatherboard in Arctic White was used throughout on this multi-family housing scheme.



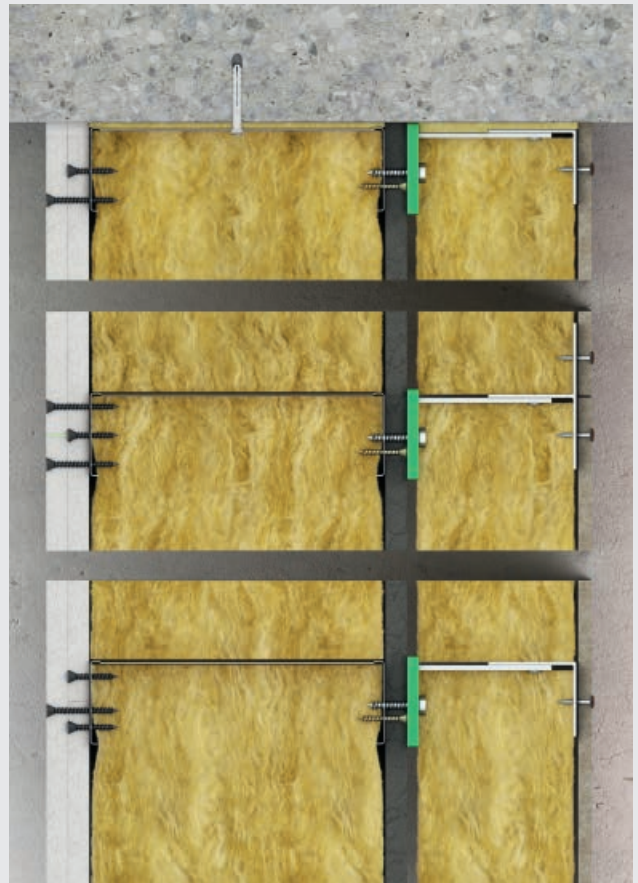
HardiePanel® cladding



System specification: HardiePanel® cladding

12.5 mm fermacell® board fixed to the interior side of the steel stud (minimum size 75 mm) with an exterior cladding support system fixed back to the studs through HardieWindbreaker® sheathing board, supporting the HardiePanel® cladding facade.

HardiePanel® cladding





Le Grande Large, Dunkerque

"HardiePanel® helped us to deliver our unique architectural vision. A great solution which provided design flexibility with durability."

Patrick Demeulemeester, Director, Nexity



fermacell® fibre gypsum for floors

Multi-purpose performance board

fermacell® fibre gypsum is a multi-purpose dry lining board that offers a single layer solution, available in a range of sizes and thicknesses.

From wall to floor design, one board does it all, minimising wet trades on site, increasing design flexibility and saving space whilst meeting or exceeding building regulations.

Our boards also have the added benefit of being able to be installed before the building is water tight, to enable ease and speed of fitting.



Ultimate flexibility

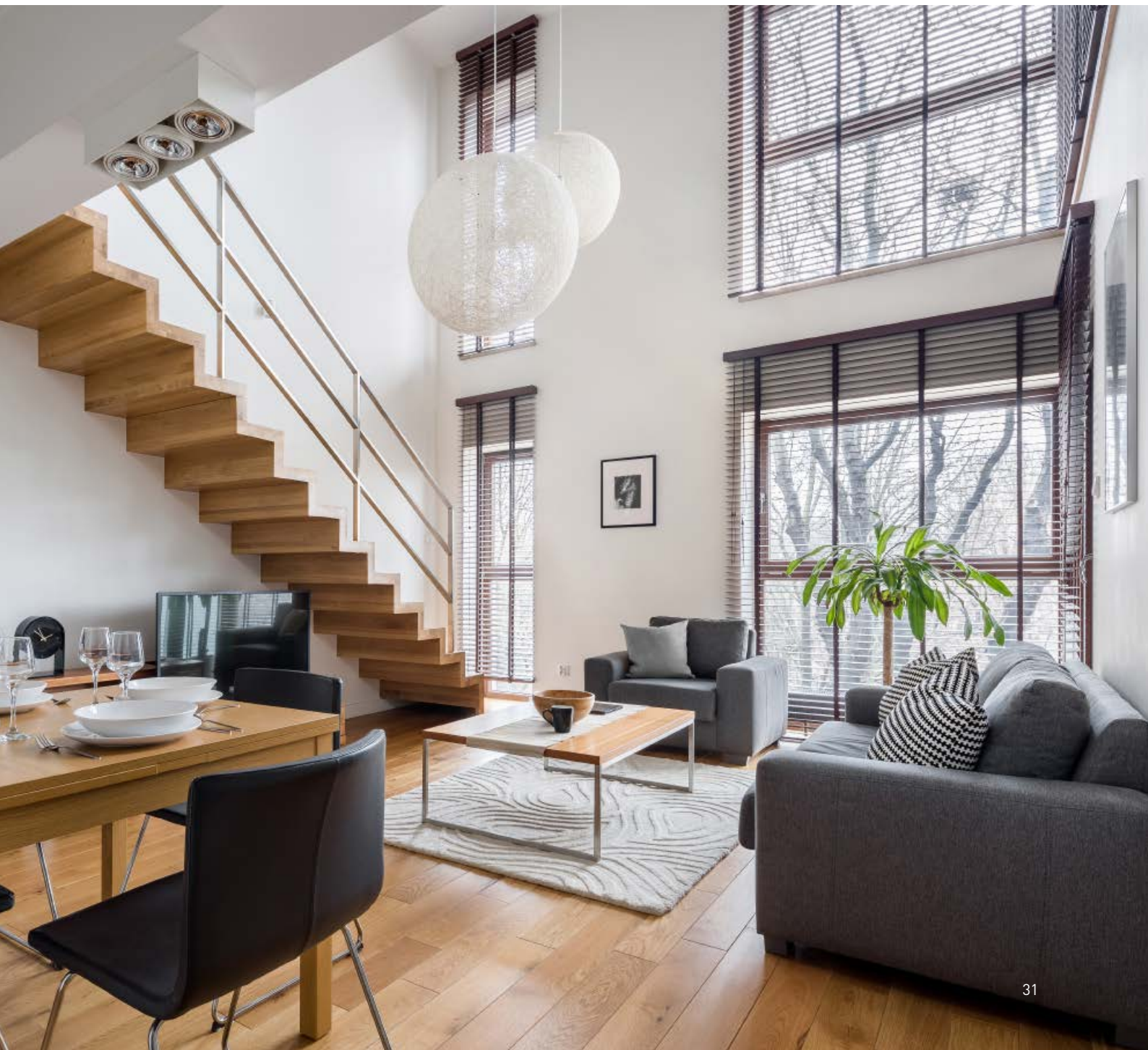
As a robust, impact resistant overlay solution, fermacell® flooring systems offer full flexibility when it comes to choosing your ideal floor covering. From textile and laminate to tile and wood, the possibilities for flooring coverings are vast.

Simplify your build

Quick and easy to install our boards are supplied in handy lightweight size of 1500 x 500 mm and are installed as a twin-layer interlocking system, eliminating the need for wet trade completely. Ready to work on the next day.



fermacell® underfloor heating overlay is ideal for homes of all shapes and sizes as its low thermal resistance provides superior heat transference compared to traditional screeds and timber - saving overall energy consumption.



fermacell® fibre gypsum

Typical specification for floors

fermacell® flooring offers an engineered dry screed overlay for optimising both acoustic and thermal performance.

The perfect partner for underfloor heating systems, fibre gypsum boosts heat with over double the thermal conductivity of timber. A specialist acoustic overlay board is available with an additional wood fibre layer to further dampen both impact and airborne noise.





fermacell® 2E31 acoustic overlay system



System specification: 2E31 acoustic overlay system

2 x 10 mm fermacell® boards plus 10 mm wood fibre. 4kN permissible point load can be achieved with the addition of a third layer of 10 mm fermacell® board.

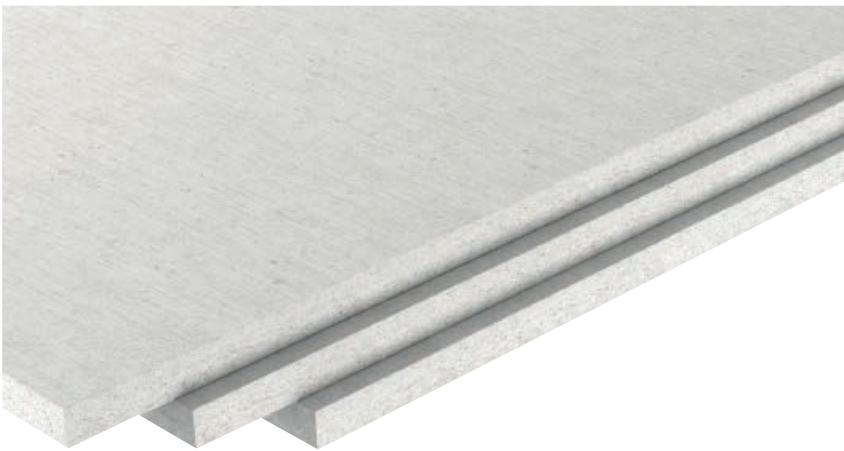
fermacell® spandrel panels

Multi-purpose performance boards

fermacell® spandrel boards offer a pre-assembled structural panel solution, to be used as a separating wall to help stop the spread of fire in new build housing

Our fibre gypsum board is inherently stronger than standard plasterboard. One 15 mm sheet of fermacell® board replaces two sheets of plasterboard to achieve exceptional fire and acoustic requirements, thus giving all the performance you need with half the time and labour.

fermacell® spandrel panel is LABC assured registered and is approved by NHBC and TRA.



Resists the spread of fire

Protect homes with fermacell® boards, offering inherent fire resistance and non-combustibility, with an A2 s1 d0 rating.

Spandrel panels - made using 15 mm fermacell® board - provide a 60 minute fire performance. Tested to BS 476: Part 22: 1987.

Enhances acoustic performance

fermacell® spandrel panels are suitable for use with Robust Details for walls, and comply with Part E sound insulation performance requirements of the UK Building Regulations. Minimise both airborne and impact noise transmission between properties by switching out standard plasterboard for fermacell spandrel panels.



Right Avellana Place, Colchester. Spandrel panel boards were used in the roof space of this terraced house for acoustic and fire protection. HardiePlank® cladding was used in a mix of colours to achieve this traditional new England look.

Below Grigg Lane, Kent. HardiePlank® cladding was used as a half wrap for this new build social housing project.



fermacell® spandrel panels

Multi purpose building boards

The use of fermacell® spandrel panels not only protects properties, it also saves time through labour saved; with fermacell, only one board is needed.

fermacell® spandrel panels are pre-cut to your desired size, are quick and easy to install, and offer up to 8 weeks' exposure time on site.



Right fermacell® spandrel panels were chosen as a lightweight environmentally friendly solution to standard plasterboard and masonry.



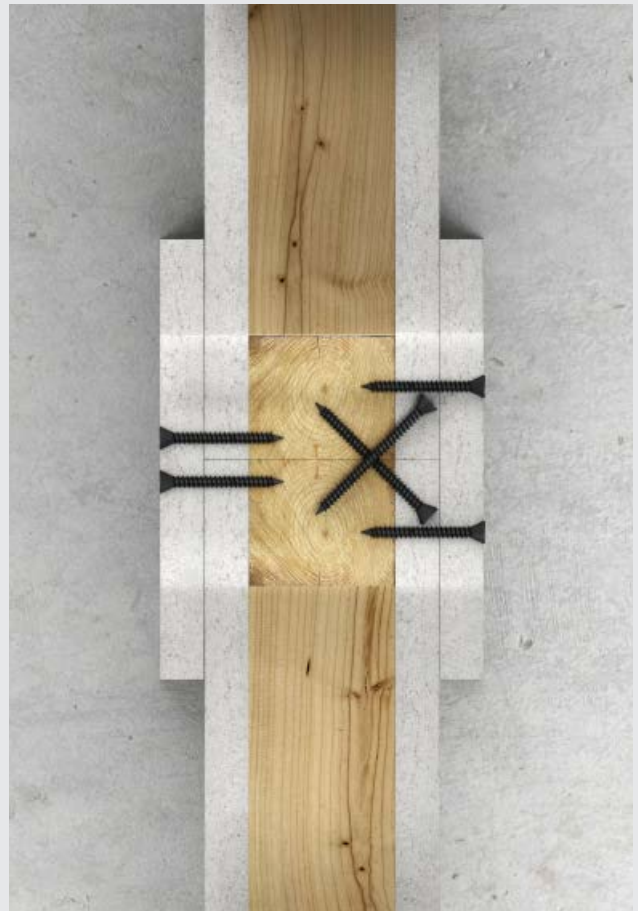
fermacell® spandrel panel



System specification: fermacell® spandrel panel

15 mm fermacell® fibre gypsum board fixed to either side of a 38 mm or 44 mm timber frame.

fermacell® spandrel panel





“Choosing to use James Hardie® products was an important decision for us, we needed materials that would stand the test of time.”

Kam Mackrory, Berkeley Homes

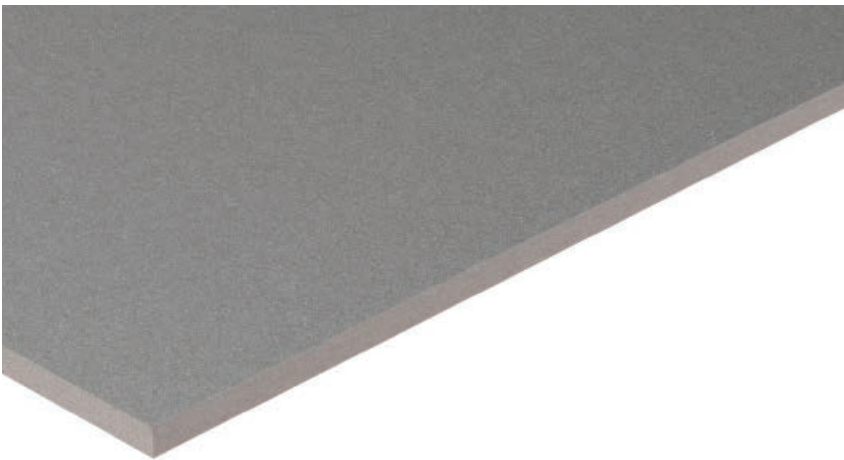


HardieWindbreaker® sheathing board

Extreme defence against the elements

HardieWindbreaker® sheathing offers a next generation in weather defence air barriers.

With superior fire resistance, water-tightness and structural racking strength, HardieWindbreaker® sheathing helps new builds stand the test of time.



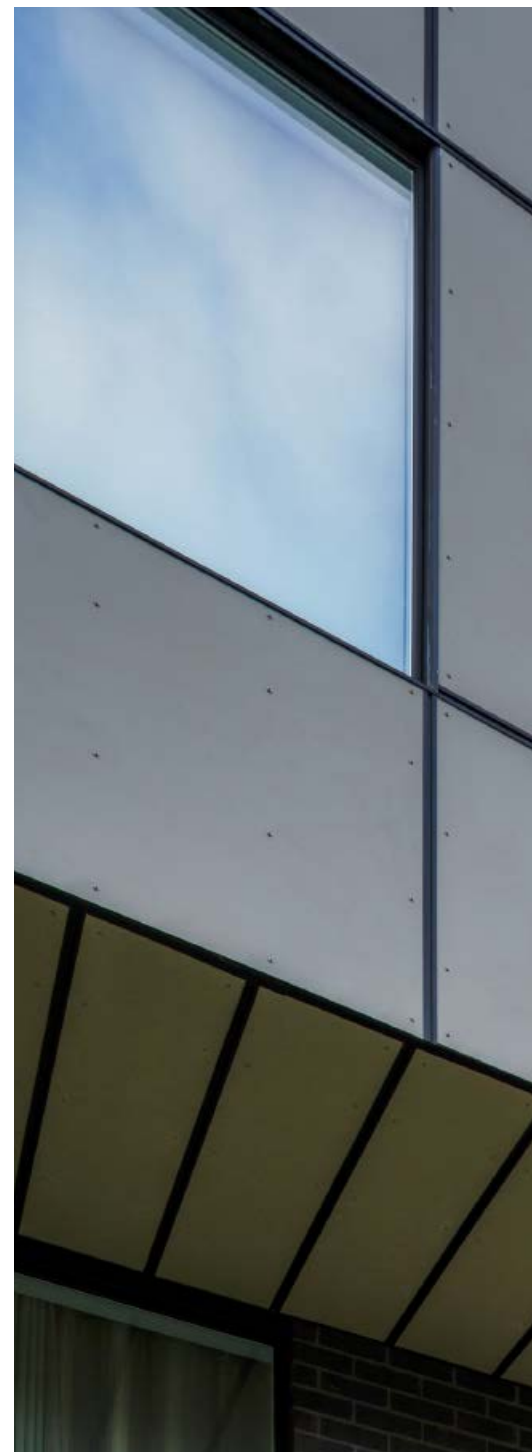
A quicker build

Early close-in avoids weather delays, removing the need to reschedule trades and reducing unplanned equipment hire costs. Our boards will not warp or shrink when exposed to adverse climates, and offer a guaranteed 12 months' exposure during construction.

A more weather-tight building

HardieWindbreaker® sheathing provides superior weather-tightness as our water-repellant sealant stops moisture getting in; whilst the board's breathability allows moisture vapour to get out.

Our boards help to equalise the air pressure inside the outer wall cavity, allowing your building to stand up to extra high wind zones.



Right Maidstone Barracks, Kent. HardiePanel® cladding and HardiePlank® cladding used throughout to create this full wrap ventilated facade with sheathing.

Below Sunset Hill, Essex. Again, James Hardie products used across the facade system.



HardieWindbreaker® sheathing board

Typical specification for ventilated facades

HardieWindbreaker® board is lightweight, easy to cut, flexible to handle and can be fixed using either screws, nails or staples.

HardieWindbreaker® sheathing board is BBA certified.



Right Reynolds Court, Uttlesford. James Hardie® facade solutions were used for this large retired housing development.



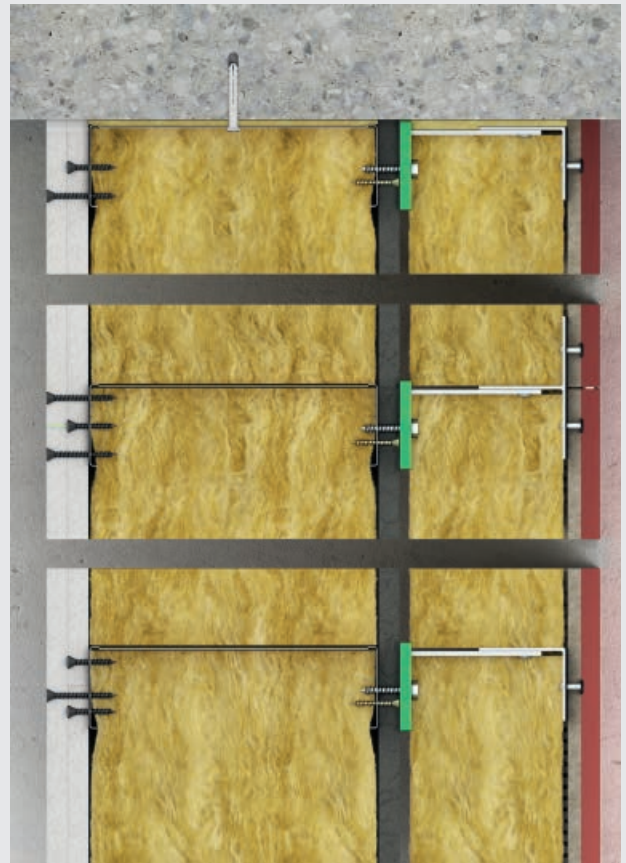
HardieWindbreaker® sheathing board system



System specification: HardieWindbreaker® sheathing

12.5 mm fermacell® board fixed to the interior side of the steel stud (minimum size 75 mm) with an exterior support system fixed back to the studs through HardieWindbreaker® sheathing board, supporting the facade cladding.

HardieWindbreaker® sheathing board system



HardieBacker® tile backerboard

Ultimate protection against moisture damage

HardieBacker® tile backerboard is an advanced water resistant construction material ideal for walls, floors and ceilings.

It's specifically designed for use in rooms where there are damp conditions, such as bathrooms.

Whereas traditional materials such as plywood and plasterboard are liable to swell, break or disintegrate when wet, HardieBacker® board stays strong and firm, no matter how damp it gets.



Strongest on the market

Our board is robust and rigid and provides a dimensionally stable, flat surface for tiling. It is the strongest tile backing board on the market, with a tile hanging weight of 200kg/m². From granite to stone, even the largest format tiles are secure on our engineered substrate.

Doesn't fail

Our advanced fibre cement technology protects your project by providing a water, mould and rot resistant substrate that will prevent cracked tiles and grout.



Below Large format tiles and stone are becoming increasingly popular in high-end bathrooms making HardieBacker® cement board the ideal solution.



HardieBacker® tile backerboard

Typical specification

HardieBacker® tile backerboard is ideal for use in showers and bathrooms to protect tiles and grout from moisture damage.

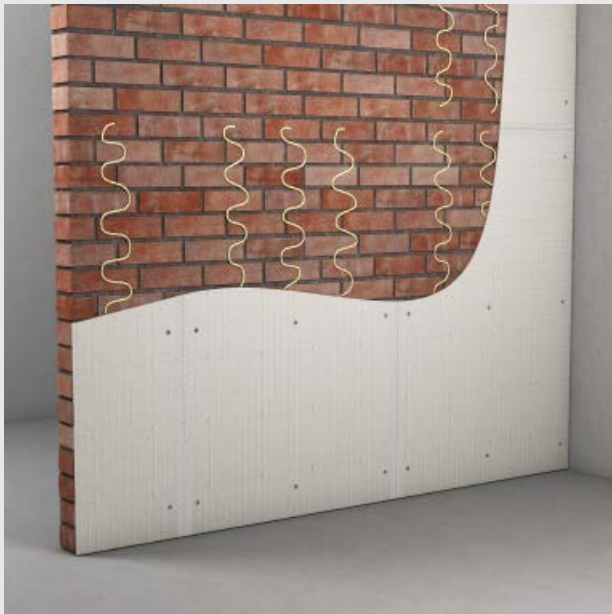
It's quick and easy to fit on to masonry, timber or steel and installation is based on the same simple construction techniques that are used with standard dry lining materials.





Right Suitable for wet rooms to offer moisture protection and prevent tiles and grout from cracking.

HardieBacker® tile backerboard




System specification: HardieBacker® on masonry wall
HardieBacker® 6 mm backerboard fixed directly onto a masonry wall.

HardieBacker® tile backerboard







"I used HardieBacker because it's the market leader. I used large format, heavy tiles and I wanted peace of mind that they would hold firm, and that my tiles and grout will be protected from cracking."

James Hirst, homeowner

Get in touch

Further product information:

phone 0121 311 3480

email info@jameshardie.co.uk

web www.jameshardie.co.uk
www.fermacell.co.uk

Image copyrights

Front © Daniel Hundven-Clements

2-19 © Daniel Hundven-Clements

20 © Chipper Hatter

21 © Daniel Hundven-Clements

22-23 © Daniel Hundven-Clements

26 © Fanch Galivel

28 © Stephanie Chalmeau Photographie

31 © istock, In4mal

32-33 © istock, Peter_Visual | istock, Phototropic

35 © Daniel Hundven-Clements

36-37 © Daniel Hundven-Clements

38-39 © Daniel Hundven-Clements

41 © Daniel Hundven-Clements

42 © RODE Architects

43 © Daniel Hundven-Clements

45 © istock, NiseriN

46 © istock, Bombaert

48-49 © istock, In4mal

51 © Daniel Hundven-Clements





Get inspired at

www.jameshardie.co.uk
www.fermacell.co.uk

